

Real Time Cloud Service New User Setup Guide

General Information

Thank you for your interest in Maretron's Real Time Cloud Services!

Maretron Real Time Cloud Service allows you to remotely and seamlessly connect to your vessel's NMEA 2000® network using [N2KView®](#) and [N2KView®-Mobile](#) software, so you can monitor & control your vessel from anywhere in the world.

Required Components

- IPG100 - Network Gateway
- Internet Connection (Provided by user)
- Windows PC (7 or newer) for setup

PC Downloads

- [N2KAnalyzer](#)
- [N2KView](#)

Mobile Downloads (Apple / Android)

- [N2KView Mobile](#)



Procedure

1. Create a new account by visiting <https://rtcs.maretron.com/signUp.php>.

- a. First Name
- b. Last Name
- c. Email Address
- d. User Name

This will be the name of your vessel / connection that will be used for N2KView & N2KView Mobile login

- i. **All lowercase**
 - ii. **Numbers are acceptable**
 - iii. **Supported special characters @ ! / . - _ (space), but not as the 1st character**
- e. Key No.

- i. IPG100 w/no N2KView License Key = IPG100 Serial Number **162xxxx**

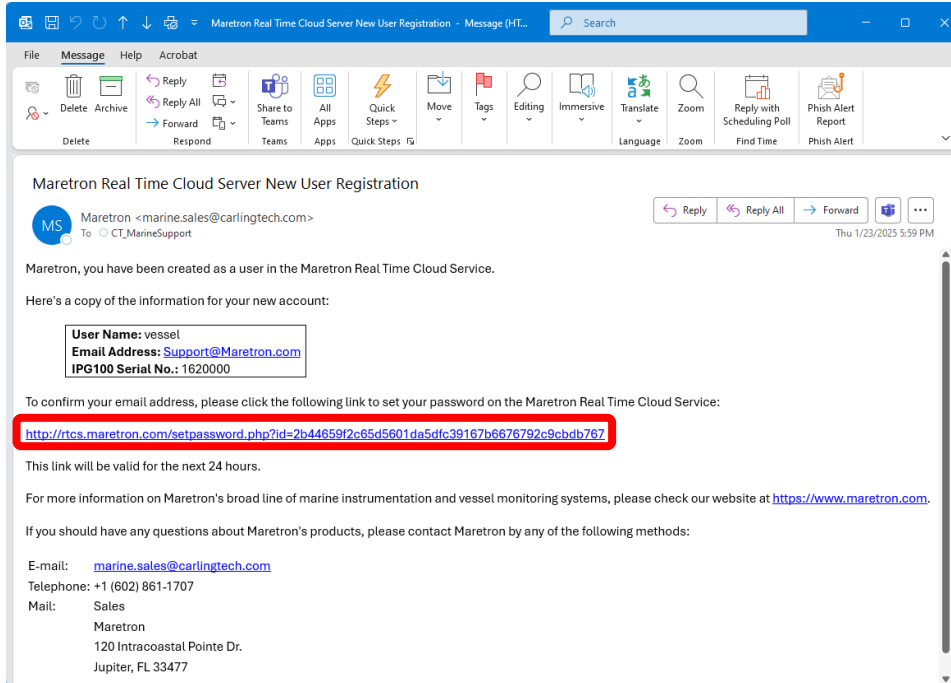


- ii. IPG100 w/ N2KView License Key = N2KView Key Number **xxxx**

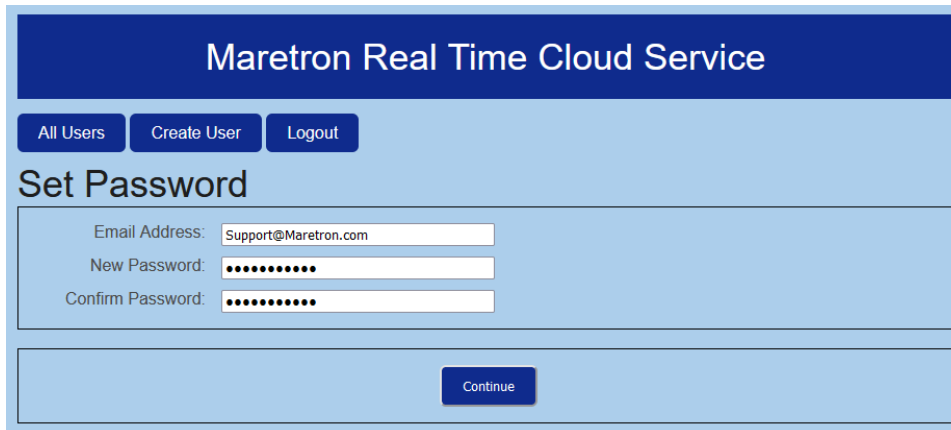


2. Agree to End User's License Agreement by scrolling to the bottom, checking the box and pressing **Continue**.

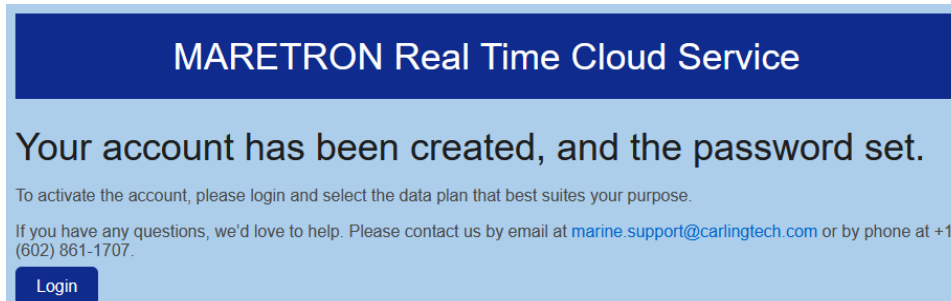
- A confirmation email of the account setup will be sent to the email address provided. Select the link within the email to complete the account setup by setting your account management password.



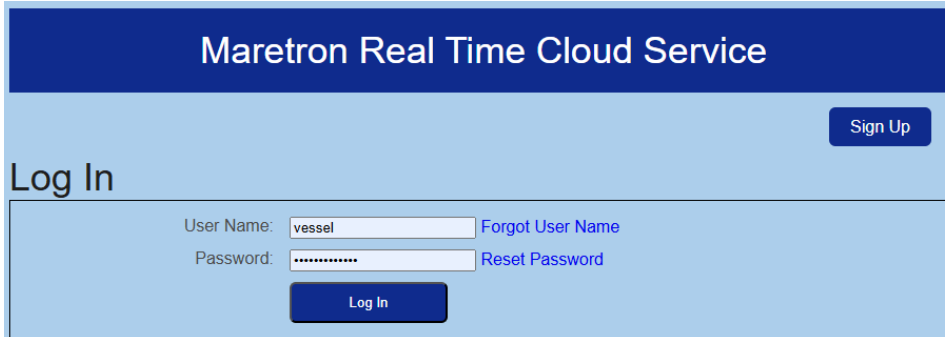
- This will launch your internet browser to confirm your account setup and to set your password. Press **Continue** when complete.



- Press **Login** to return back to the main Login page of RTCS account management.



6. Using your account **User Name** and **Password**, please log into your account.



7. Select the type of Subscription service desired
- 3-Month (90 Day) Trial
 - 1 Year



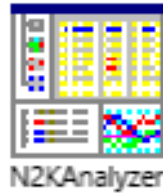
8. Your RTCS profile setup is complete!



9. The next step is to enable the Cloud Services on your IPG100 gateway.

*This requires you to be onboard the vessel, connecting with a Windows PC to the vessel's network.

10. Launch N2KAnalyzer on your PC.



11. Connect to your IPG100 network gateway.
This will populate a list of all NMEA 2000® connected devices.

Node	Manufacturer	Mfg Model ID	Mfg Model Version	Mfg Serial Number	Source	Device Instance	Data Instance	Label	Current Software	Available Software	Installation Description #1	Installation Description #2	Bandwidth
48	Maretron	DCR100	2.0	1701758	0	0			1.1.2.3	1.2.3.1			0.3%
49	Maretron	DCR100	2.0	1701468	3	3	lights		1.2.2.2	1.2.3.1			0.3%
11	Maretron	DSM570	2.0	1940011	4	4			1.9.1.2	1.9.2.1			0.0%
23	Maretron	GPS200	3.0	1581637	0	0	GPS		4.0.2.12	4.0.2.12			3.0%
29	Maretron	IPG100	1.0	1620000	0	0	Network Gateway		4.2.0.1	4.2.0.1			0.1%
25	Carling Techn.	MConnect	1.0	1900000	2	2	MConnect		1.1.3.202...	-			0.0%
00	Maretron	RIM100	2.0	1440935	0	7			1.2.2.2	1.2.2.2			0.0%
D1	Maretron	SIM100	1.0	1421620	6	6	Cpt SR Light Sw		1.2.2.2	1.2.2.2			0.0%
72	Maretron	TLA100	2.0	1264004	Fuel	7			2.1.2.2	2.1.2.2			0.0%
28	Maretron	VDR100	1.0	1761063	0	0			3.0.7.1	3.0.7.1			0.0%
80	Maretron	WSO200	1.0	1740454	0	0	Weather Instrument		1.1.2.1	1.1.2.1			1.0%

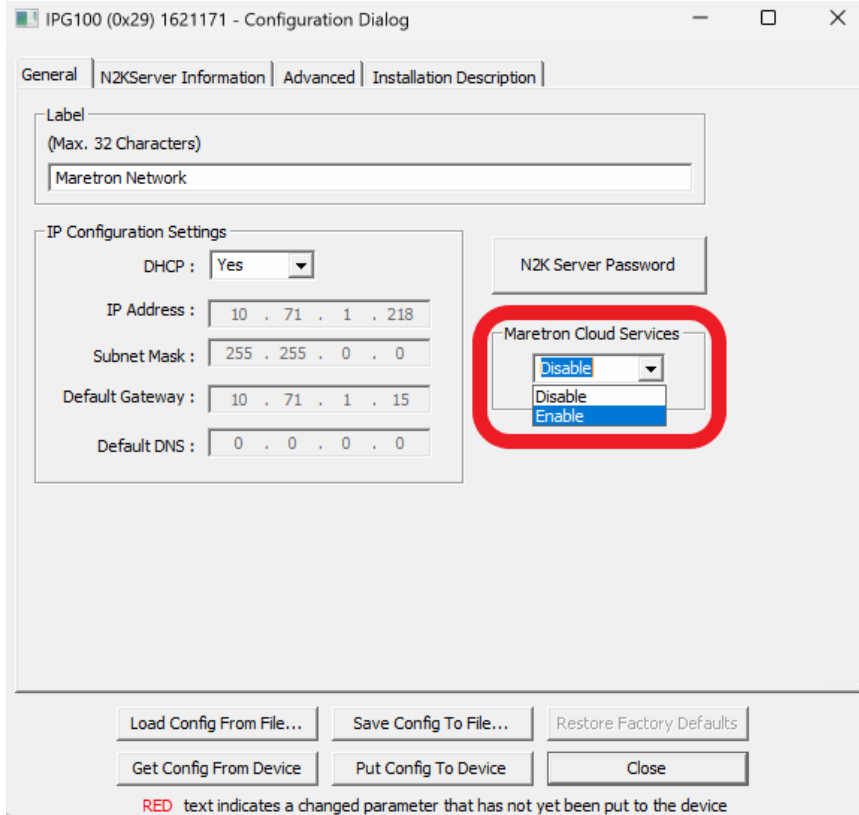
12. Locate and select your IPG100 on your NMEA 2000® network, should be listed in Blue text.

Expand	Node Address	Manufacturer	Mfg Model ID	Mfg Model Version	Mfg Serial Number	Source	Device Instance	Data Instance	Label	Current Software	Available Software	Installation Description #1	Installation Description #2	Bandwidth
	48	Maretron	DCR100	2.0	1701758		0	0		1.1.2.3	1.2.3.1			0.3%
	49	Maretron	DCR100	2.0	1701468		3	3	lights	1.2.2.2	1.2.3.1			0.3%
	11	Maretron	DSM570	2.0	1940011		4	4		1.9.1.2	1.9.2.1			0.0%
	23	Maretron	GPS200	3.0	1581637		0	0	GPS	4.0.2.12	4.0.2.12			3.0%
	29	Maretron	IPG100	1.0	1620000		0	0	Network Gateway	4.2.0.1	4.2.0.1			0.1%
	25	Carling Techn.	MConnect	1.0	1900000		2	2	MConnect	1.1.3.202...	-			0.0%
	00	Maretron	RIM100	2.0	1440935		0	7		1.2.2.2	1.2.2.2			0.0%
	D1	Maretron	SIM100	1.0	1421620		6	6	Cpt SR Light Sw	1.2.2.2	1.2.2.2			0.0%
	72	Maretron	TLA100	2.0	1264004	Fuel	7			2.1.2.2	2.1.2.2			0.0%
	28	Maretron	VDR100	1.0	1761063		0	0		3.0.7.1	3.0.7.1			0.0%
	80	Maretron	WSO200	1.0	1740454		0	0	Weather Instrument	1.1.2.1	1.1.2.1			1.0%

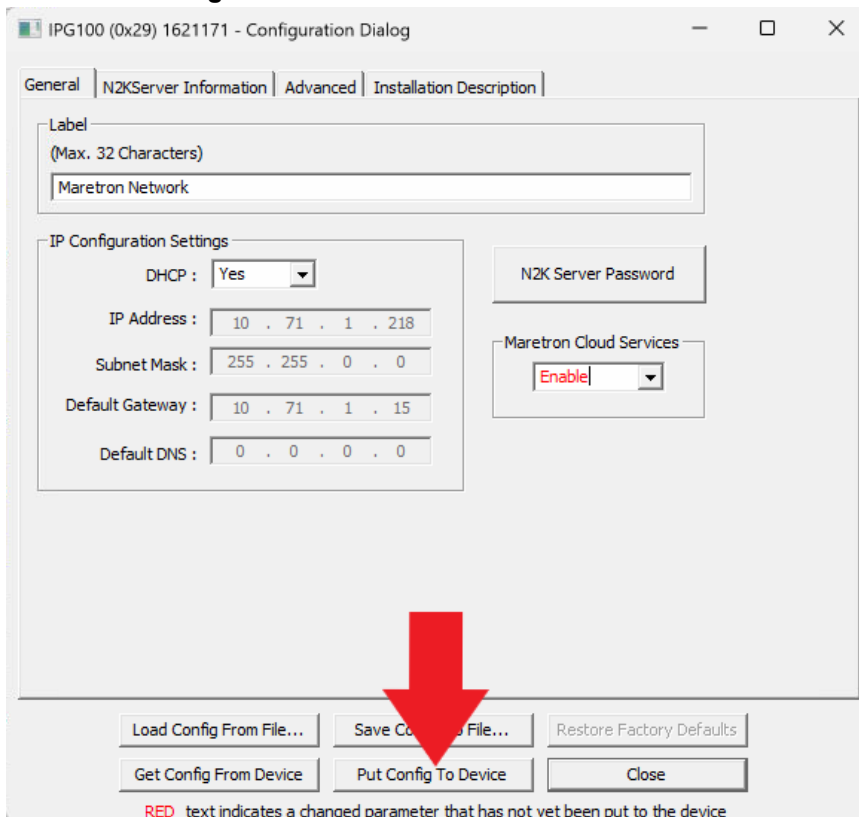
13. Right-click on IPG100 and select **Configure Device**.

Expand	Node Address	Manufacturer	Mfg Model ID	Mfg Model Version	Mfg Serial Number	Source	Device Instance	Data Instance	Label	Current Software	Available Software	Installation Description #1	Installation Description #2	Bandwidth
	48	Maretron	DCR100	2.0	1701758		0	0		1.1.2.3	1.2.3.1			0.3%
	49	Maretron	DCR100	2.0	1701468		3	3	lights	1.2.2.2	1.2.3.1			0.3%
	11	Maretron	DSM570	2.0	1940011		4	4		1.9.1.2	1.9.2.1			0.0%
	23	Maretron	GPS200	3.0	1581637		0	0	GPS	4.0.2.12	4.0.2.12			3.0%
	29	Maretron	IPG100	1.0	1620000		0	0	Network Gateway	4.2.0.1	4.2.0.1			0.1%
	25	Carling Techn.	MConnect	1.0	1900000		2	2	MConnect	1.1.3.202...	-			0.0%
	00	Maretron	RIM100	2.0	1440935		0	7		1.2.2.2	1.2.2.2			0.0%
	D1	Maretron	SIM100	1.0	1421620		6	6	Cpt SR Light Sw	1.2.2.2	1.2.2.2			0.0%
	72	Maretron	TLA100	2.0	1264004	Fuel	7			2.1.2.2	2.1.2.2			0.0%
	28	Maretron	VDR100	1.0	1761063		0	0		3.0.7.1	3.0.7.1			0.0%
	80	Maretron	WSO200	1.0	1740454		0	0	Weather Instrument	1.1.2.1	1.1.2.1			1.0%

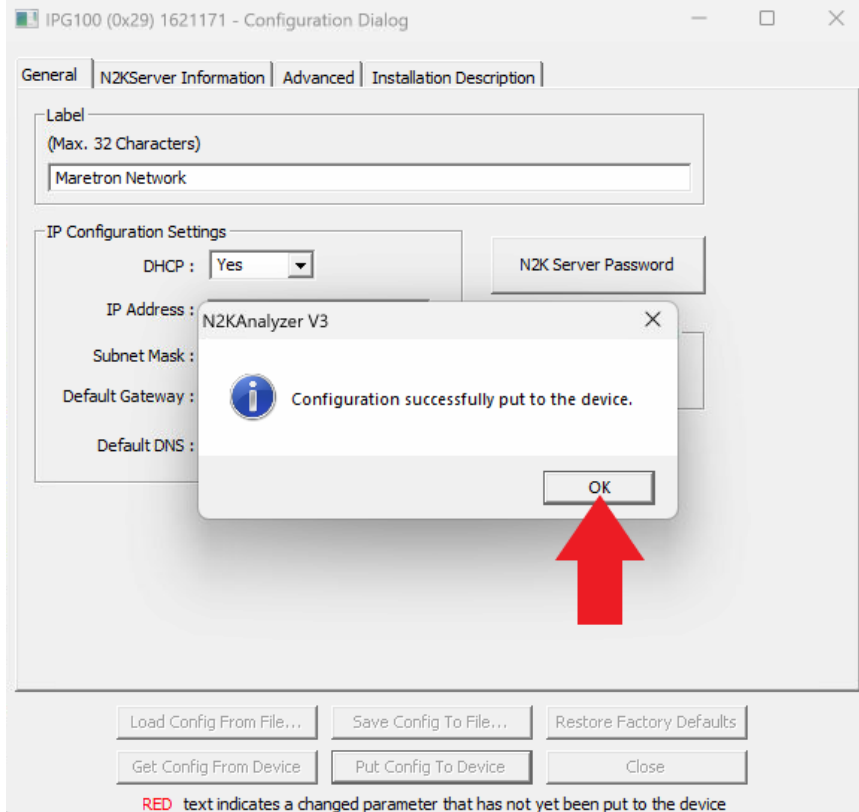
14. Under the General tab, locate the section labeled Maretron Cloud Services, set the status to **Enable**.



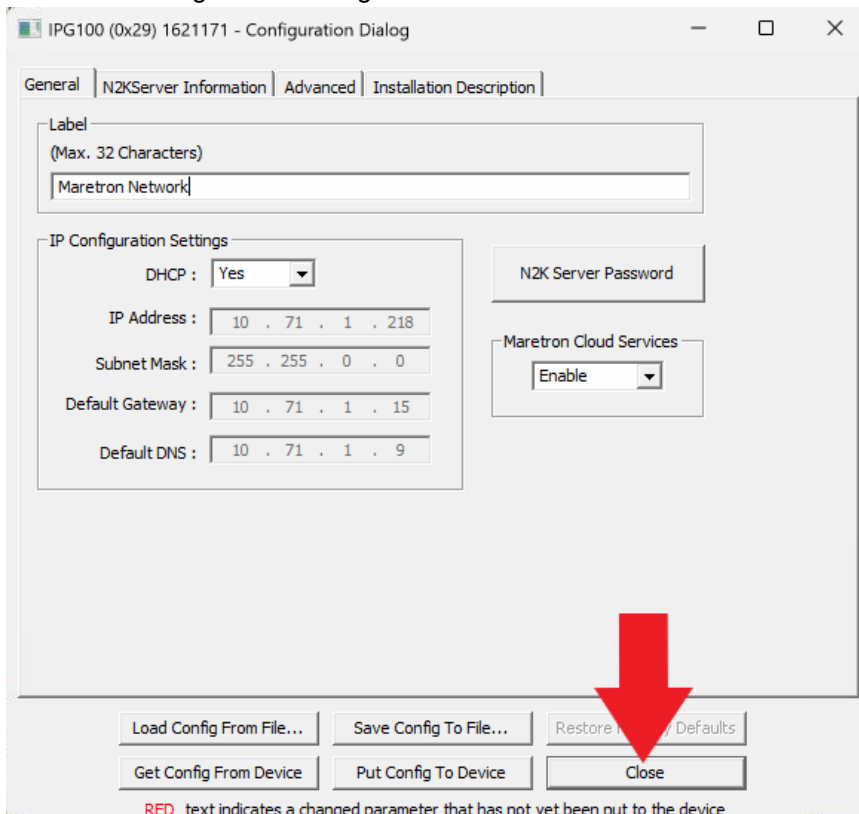
15. Press **Put Config to Device**.



16. Close the Window to confirm the settings have been applied by pressing **OK**.



17. **Close** the Configuration Dialog box.



18. Your cloud connection setup is complete!

Please verify your internet connection and validate the account using your PC or Mobile Device to run N2KView.

**** NOTES ****

N2KView Mobile (Android or Apple), connecting via local LAN or Cloud, the user will need to obtain a configuration file from the IPG100.

Please refer to the following guides for additional support:

- Uploading and managing stored N2KView Configurations on the IPG100 via PC, MBB or TSM.
 - o <https://www.maretron.com/wp-content/phpkbv95/article.php?id=704>
- Downloading an N2KView Configuration from IPG100 to Mobile Device (Android / Apple)
 - o <https://www.maretron.com/wp-content/phpkbv95/article.php?id=655>

For installation support, please contact:

Maretron
120 Intracoastal Pointe Dr.
Jupiter, FL 33477
USA
Toll Free: +1 (866) 550-9100
Phone: +1 (602) 861-1707
support@maretron.com
www.maretron.com