

How do I enable the MBB300C for HTML5?

Maretron's MBB300C can be used as a web server that can stream the N2KView application via HTML5, an interactive Web Service, through a LAN (Ethernet) connection.

Many 3rd Party vendors label this service slightly different, but all referring to the HTML5 Service

- Garmin One Helm
- Raymarine LightHouse

In order to initialize the MBB300C to populate on a connected MFD, the MBB300C will need:

- To be connected to the same LAN (Ethernet) as the MFDs, in adjacent to the NMEA2000 connection for data
- Temporarily connected via the HDMI or VGA and a mouse to change video output

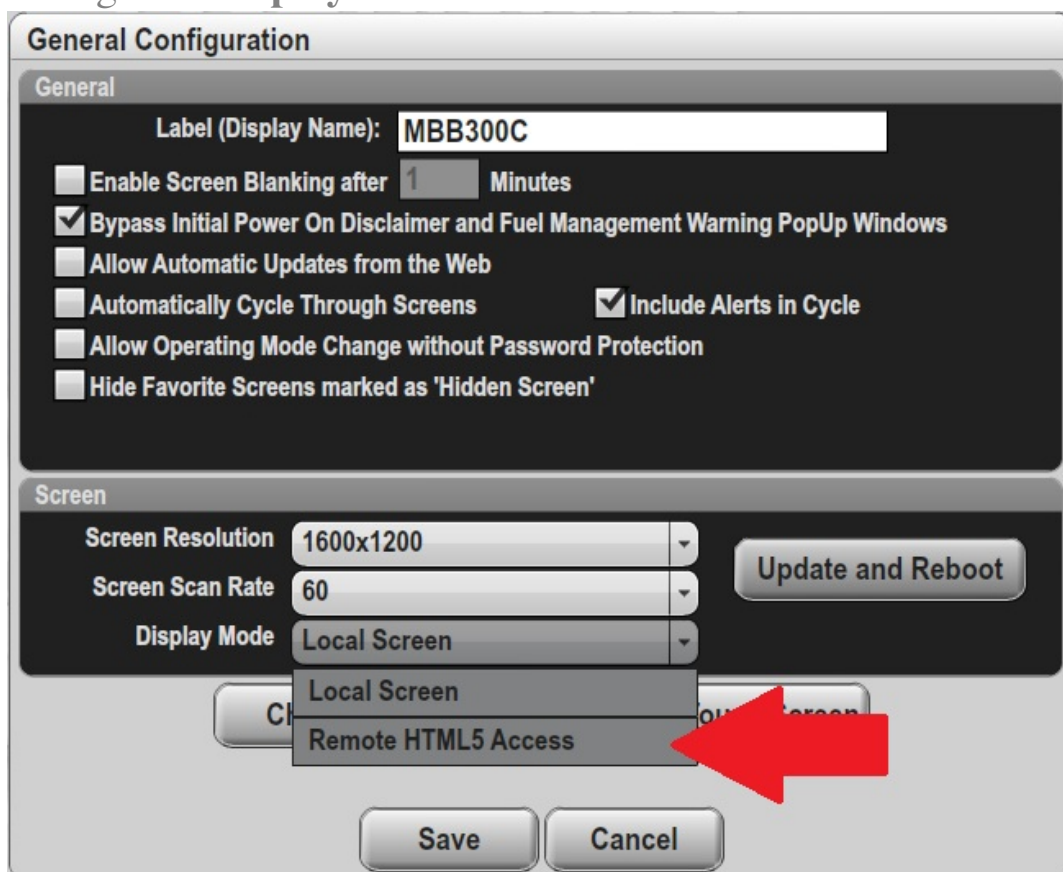
***** Disclaimer *****

Please follow requirements outlined via the 3rd Party manufactures for safely connecting the MBB300C onto their LAN connection.

i.e. Garmin requires a PoE Isolation coupler to be integrated before connecting to the Garmin Marine network

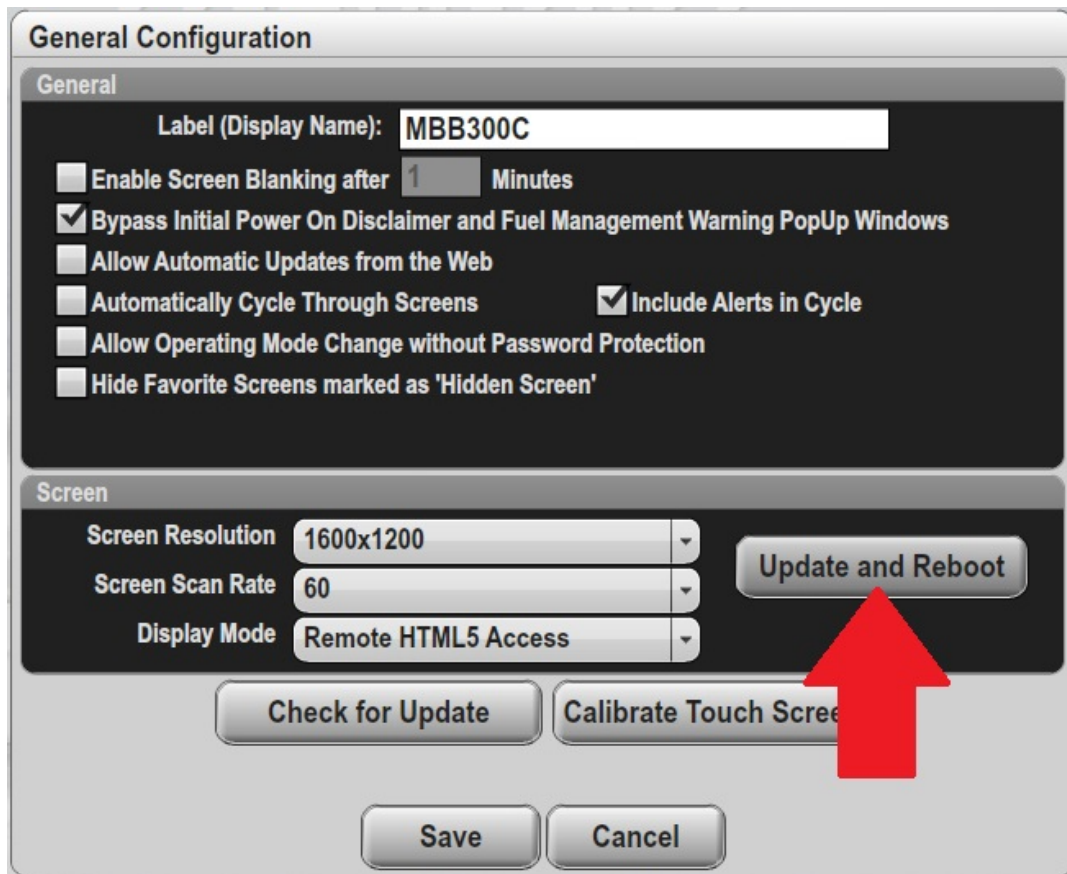
Once the above setup is established

- Power up the MBB300C
- Tap anywhere on the display to reveal the tabs and navigate to **Commands & Settings**
- Select **Configuration**
- Select **General Configuration**
- Change the **Display Mode** to **Remote HTML5 Access**



The screenshot shows the 'General Configuration' window. The 'General' tab is active. The 'Label (Display Name)' is 'MBB300C'. There are several checkboxes: 'Enable Screen Blanking after 1 Minutes' (unchecked), 'Bypass Initial Power On Disclaimer and Fuel Management Warning PopUp Windows' (checked), 'Allow Automatic Updates from the Web' (unchecked), 'Automatically Cycle Through Screens' (unchecked), 'Include Alerts in Cycle' (checked), 'Allow Operating Mode Change without Password Protection' (unchecked), and 'Hide Favorite Screens marked as 'Hidden Screen'' (unchecked). The 'Screen' tab is also visible. Under 'Screen', there are three dropdown menus: 'Screen Resolution' (1600x1200), 'Screen Scan Rate' (60), and 'Display Mode' (Local Screen). The 'Display Mode' dropdown is open, showing 'Local Screen' and 'Remote HTML5 Access'. A red arrow points to 'Remote HTML5 Access'. There is an 'Update and Reboot' button to the right of the dropdowns. At the bottom, there are 'Save' and 'Cancel' buttons.

- Next, Select **Update and Reboot**



- Once the reboot process has commenced, promptly remove the video (HDMI or VGA) and any connected user input devices, such as a mouse and/or keyboard while the MBB is rebooting.
- Your device should now populate on your 3rd Party display as an available app!!

Garmin One Helm



Raymarine LightHouse 4

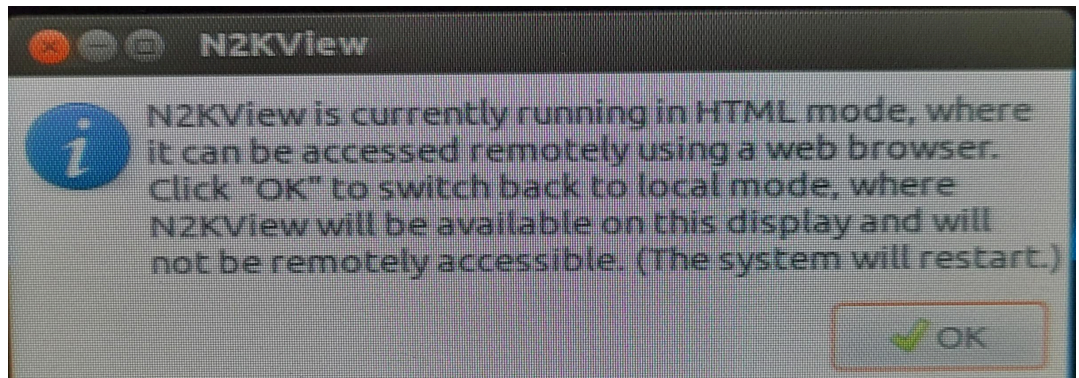
Converting from HTML5 to Local Display Mode

There are two methods for completing the service:

1. If your MFD/HTML5 interface is still available,
 - Repeat the above process to change the Display Mode from HTML5 to Local Display,
 - Then select Update & Reboot
 - During the Reboot process, reconnect video (HDMI or VGA) and input devices

2. If your HTML5 interface device is not available
 - Power down the MBB300C
 - Connect your video (HDMI or VGA) and input devices
 - Power up the MBB300C and you will be prompted with the

following message that the unit is currently in the HTML5 mode.



- Pressing the OK button will switch the mode back to local and reboot the device

Any further questions, please contact our Marine Support team at (866) 550-9100 or via email at Marine.Support@carlingtech.com.

Online URL:

<https://www.maretron.com/wp-content/phpkbv96/article.php?id=692>