

How do I configure a DCR100 channel to work as an annunciator for an N2KView Alert?

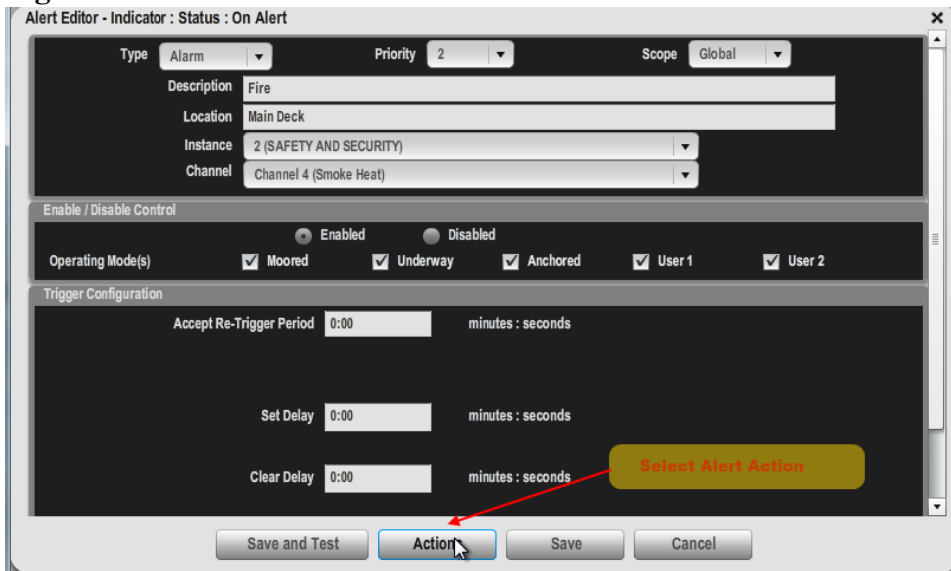
Article Number: 549 | Rating: Unrated | Last Updated: Wed, Jul 29, 2015 7:04 PM

The DCR100 offers two types of channel configuration:

- relay
- annunciator

The annunciator configuration allows for N2KView to command a DCR100 channel to close a relay when an alert is configured to have an action, as shown in Figure 1 below.

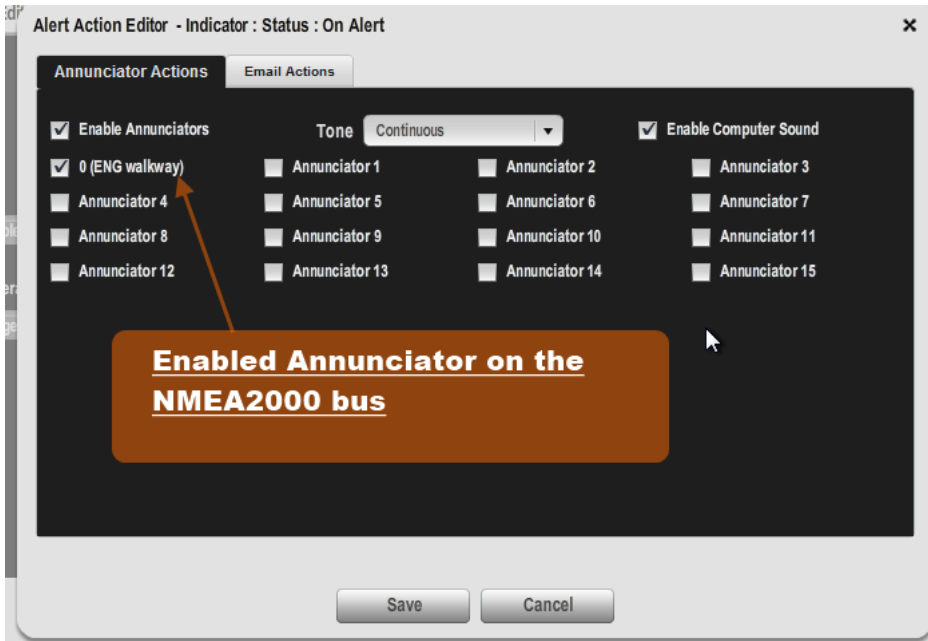
Figure 1.



This type of configuration is ideal when the vessel requires a relay to energize an on board strobe light or alarm bell not connected directly to the NMEA 2000 network.

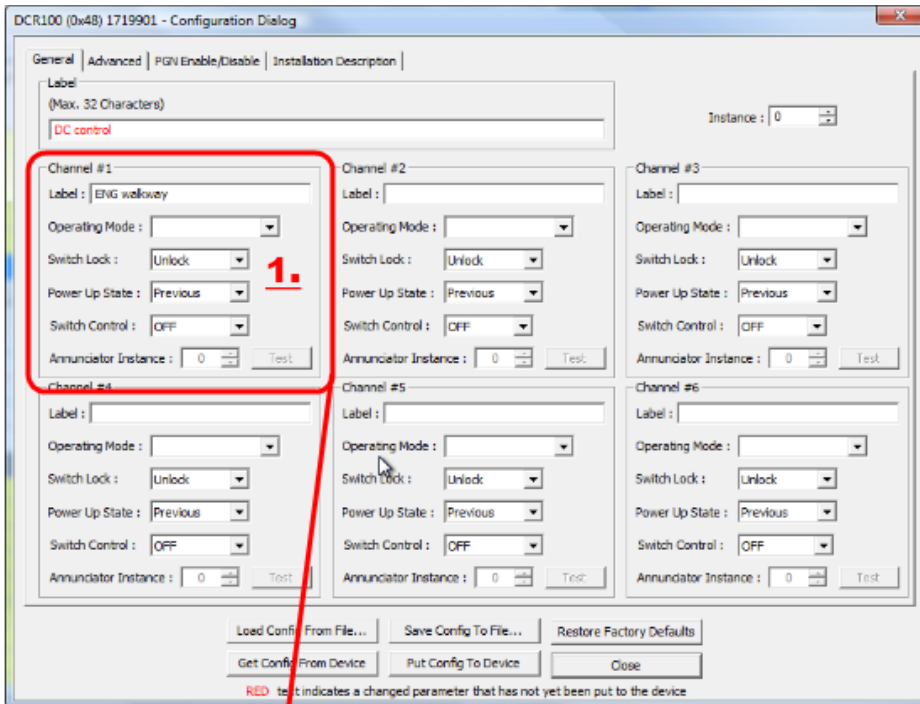
Once the DCR100 channel has been programmed to annunciator mode, the DCR100 channel can be selected in the alert action editor as shown in Figure 2.

Figure 2.



Shown in Figure 3 is an easy way to configure a DCR100 channel as an Alert/Annunciator channel.

Figure 3.



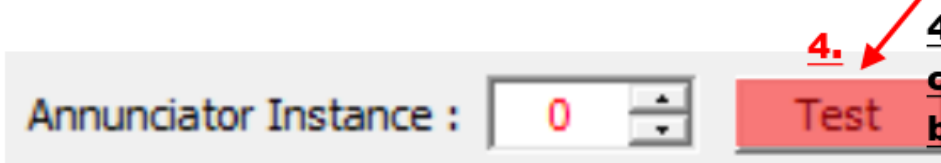
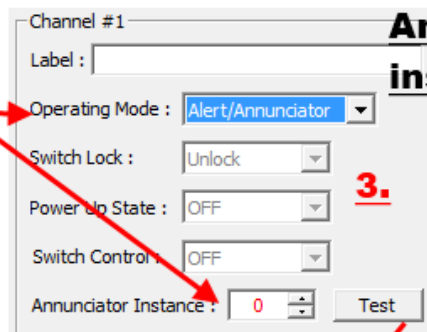
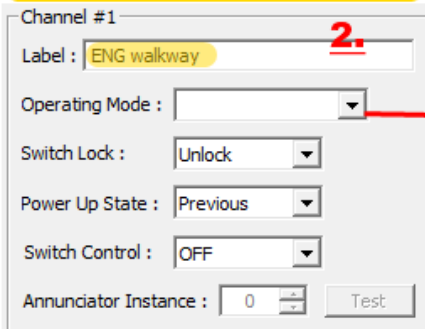
Required steps for create a Relay alert channel.

1. Choose a DCR100 channel to configure for an N2KView Alert

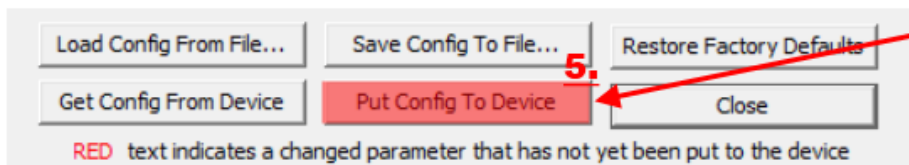
2. Label the channel so that system users can easily identify the channel purpose.

3. Select an Operating Alert mode, select the Annunciator instance.

Type a the desired channel label



4. Test the relay channel with the test button shown here.



5. Select "Put Config to Device" when channel configuration is complete.

Online URL: <https://www.maretron.com/support/knowledgebase/phpkbv7/article.php?id=549>