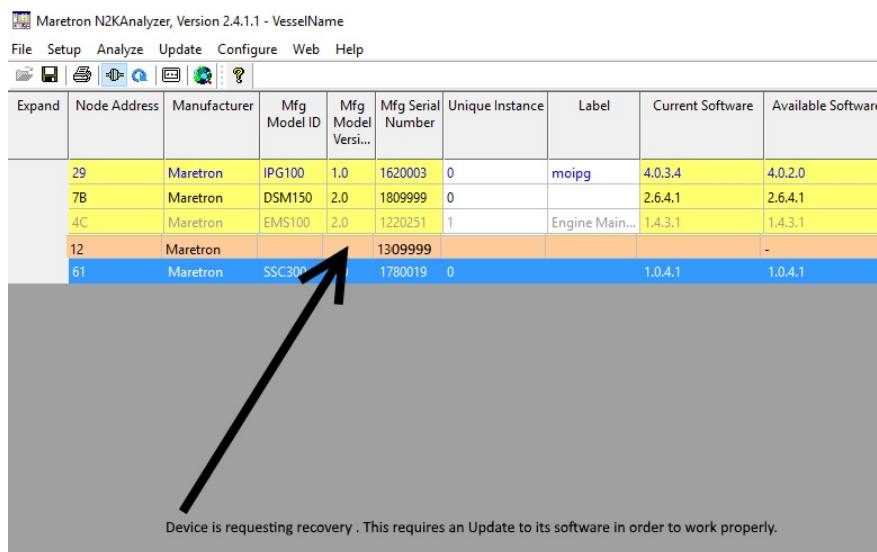


# Using N2KAnalyzer, how do I recover a Maretron device?

Article Number: 374 | Rating: 2/5 from 1 votes | Last Updated: Mon, Jan 29, 2018 3:18 PM

Occasionally, a device can be in "boot mode" (represented in N2KAnalyzer by an orange highlight of the device's entry in the device list). This can happen due to a software update which fails due to network problems.

A Maretron device that is not fully operational but you can see the units serial number in the N2KAnalyzer may need to be recovered by Updating the units software. If you see a device row colored brown showing no model ID or Model version is in recovery mode. Using the feature "Update Device Software" will force the N2KAnalyzer software to restore the unit to factory defaults.

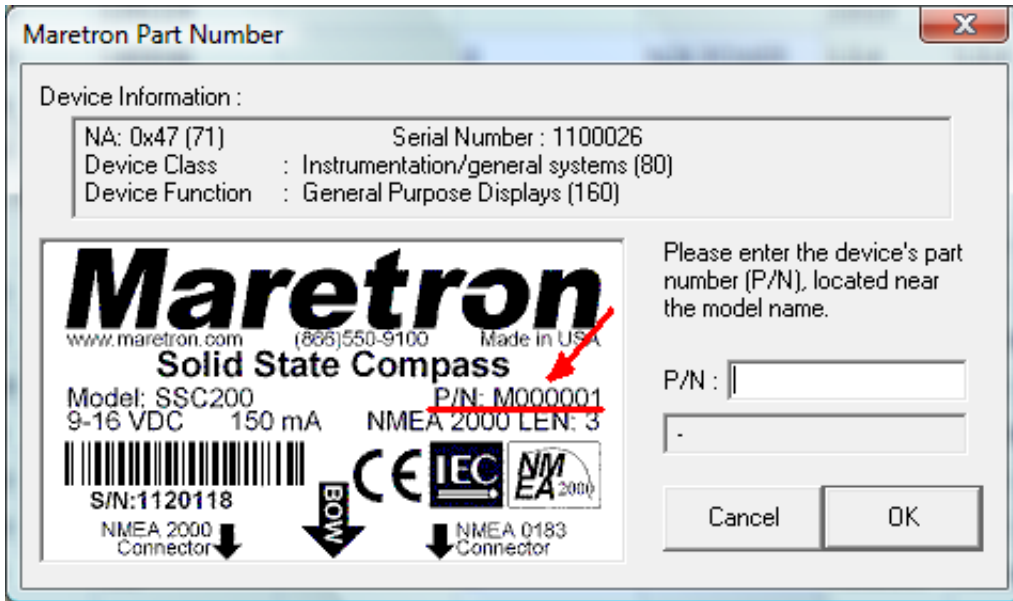


Expand	Node Address	Manufacturer	Mfg Model ID	Mfg Model Veri...	Mfg Serial Number	Unique Instance	Label	Current Software	Available Software
	29	Maretron	IPG100	1.0	1620003	0	moipg	4.0.3.4	4.0.2.0
	7B	Maretron	DSM150	2.0	1809999	0		2.6.4.1	2.6.4.1
	4C	Maretron	EMS100	2.0	1220251	1	Engine Main...	1.4.3.1	1.4.3.1
	12	Maretron			1309999				-
	61	Maretron	SSC300		1780019	0		1.0.4.1	1.0.4.1

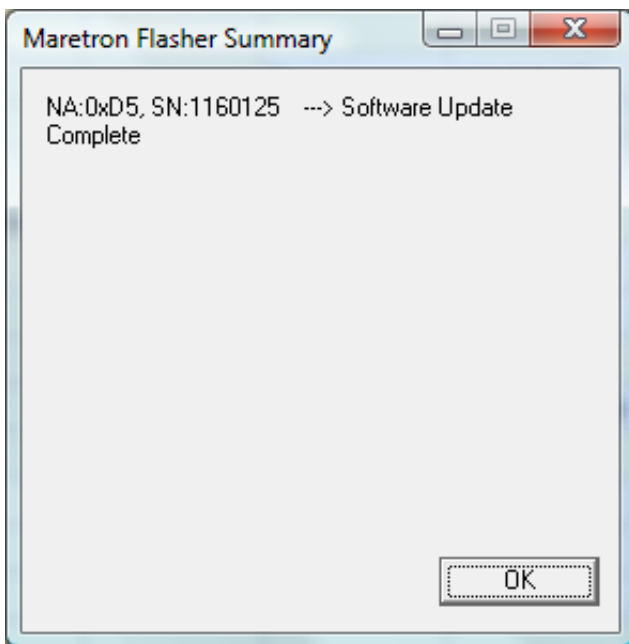
Device is requesting recovery . This requires an Update to its software in order to work properly.

Select the affected device, right-click to display the context menu, and select "Update selected device software". A window will prompt you to enter the device's part number (*found on the device label*) to which you wish to load firmware.

Warning: Improper part number entry may permanently damage the device. If you are not sure of using the device recovery, submit an RMA using the following link:[https://www.maretron.com/rma\\_request.php](https://www.maretron.com/rma_request.php)



Enter the appropriate part number using the list provided below. Click "OK" to begin your update. Once the update has successfully completed, you will receive a confirmation pop-up message.



A device's part number can be obtained on the device label attached to the unit. In some cases the device cannot be physically located to determine the correct part number. The following list below represents all of Maretron product part numbers with a model ID.

Note: Choosing an incorrect part number for a device may cause the device to not work properly.

P/N:	Maretron Model ID
M000001	SSC200
M000002	USB100
M000003	DSM200
M000004	GPS100

M000005 EMS100  
M000006 J2K100  
M000007 WSO100  
M000008 WSO100  
M000011 DST100  
M000016 TLA100  
M000017 RAA100  
M000021 SSC200  
M000022 SSC200  
M000055 DSM150 HW1  
M000063 DSM150 HW2  
M000064 DSM150 HW2 D  
M000023 DSM250  
M000024 DSM250  
M000025 DSM250  
M000074 DSM410  
M000026 DCM100  
M000027 ACM100  
M000028 SIM100  
M000029 RIM100  
M000030 ALM100  
M000031 TMP100  
M000032 TLM100  
M000033 TLM150  
M000034 TLM200  
M000035 APD100  
M000036 GPS200  
M000037 DPD100  
M000038 IPG100  
M000039 FPM100  
M000040 FFM100  
M000041 NBE100  
M000042 DCR100  
M000043 DST110 transducer  
M000044 DSM800  
M000045 MBB100  
M000046 SMS100  
M000047 GPS200  
M000048 J2K100  
M000049 WSO200  
M000050 VDR100  
M000051 SSC300  
M000052 TSM800

M000053 TSM1330  
M000054 DSM150  
M000055 DSM150  
M000057 USB100  
M000058 TSM800C  
M000059 TSN1330C  
M000060 MBB200C  
M000061 NBE100  
M000062 GPS200  
M000063 DSM150  
M000064 DSM150  
M000065 TLA100  
M000066 RAA100  
M000067 TLM100  
M000068 TLM150  
M000069 TLM200  
M000070 CLM100

Posted - Thu, Dec 22, 2011 7:28 PM. This article has been viewed 3185 times.

Online URL: <https://www.maretron.com/support/knowledgebase/phpkbv7/article.php?id=374>