

# MBB200C *Maretron Black Box Vessel Monitoring and Control*

Maretron's Black Box (MBB200C) is a dedicated processing unit that includes Maretron's N2KView® vessel monitoring and control software. Unlike a PC that allows any software to be loaded, the MBB200C runs only N2KView® software making it extremely stable and dedicated to monitoring and controlling your vessel.

The MBB200C is ruggedized for marine use and includes a solid state disk drive to withstand the pounding associated with waves. And since the MBB200C dissipates less than 25 watts, there is no need for internal cooling fans that are noisy and wear out causing electronics to overheat and fail.

The MBB200C connects to a monitor through a VGA connector and associated touch screen through a USB or serial port connection. Alternatives to controlling the N2KView® software through a touch screen include keyboards, mice, or track balls connected through USB. In addition to the two completely isolated CAN bus connectors for simple connection to single or redundant NMEA 2000® networks, the MBB200C has an Ethernet port for connecting Internet Protocol (IP) cameras for viewing within the N2KView® software.



*The following accessory is available for the IPG100:*

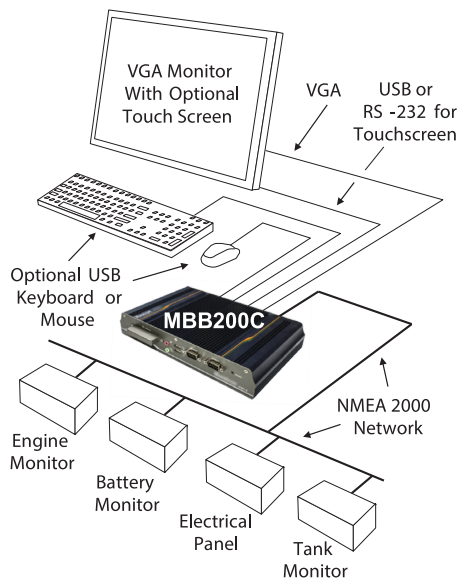
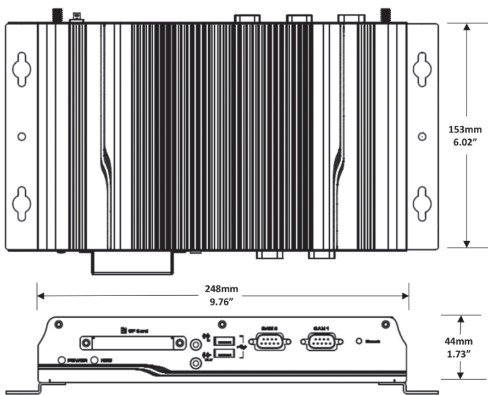


**MBB200CBL-1.0**

Of course you get the same flexibility using Maretron's N2KView® software from the MBB200C as you would running the software on a PC, which includes the ability to configure as many screens as you want with exactly the information you want to see. Plus you get free upgrades to the software as improvements and new features are added.

## **Products**

PART NUMBER	DESCRIPTION
MBB200C-01	Black Box Vessel Monitoring and Control (Direct NMEA 2000® Connection)
MBB200CBL-1.0	MBB200C NMEA 2000® 1.0m Cable



### Specifications

Parameter	Value	Comment
Video Connector	One VGA Port (RGB or D-sub 15)	For Monitor Connection
Monitor Resolution	2048 x 1536 Maximum	
USB Connector	Four USB 2.0 connections	For connecting Peripherals (Mouse, keyboard, etc.) and or touch screen connectivity
Serial Connector	One RS232 9-Pin D Connector	For touch screen alternative connection
Touchscreen Drivers	TSHARC, 3M MicroTouch, ELO, eGalax	
Ethernet Connector	Two RJ-45 GbE	For connection to Maretron IPG100 Gateway or/and router
Audio Connection	One Speaker Output	
Controller Area Network (CAN) Ports	Two DB-9 Connectors	One NMEA 2000® Adapter Cable Included

### Certifications

Parameter	Comment
FCC class A and CE Mark	Electromagnetic Compatibility
NMEA 2000®	

### Electrical

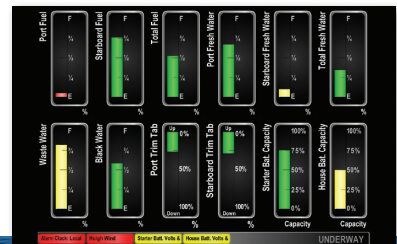
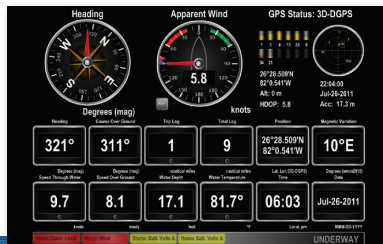
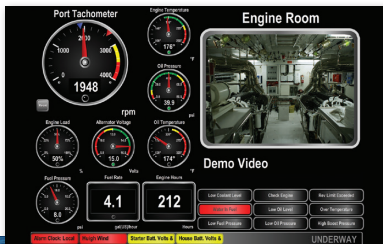
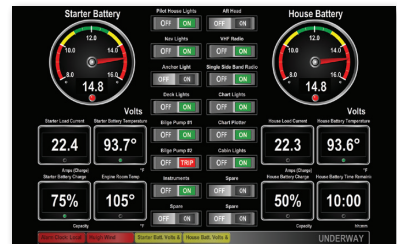
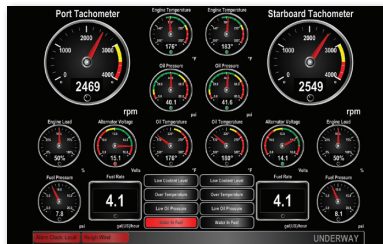
Parameter	Value	Comment
Operating Voltage (Dedicated Supply Connection)	9-36 Volts	DC Voltage
Power Consumption (Dedicated Supply Connection)	22.2 Watts	
Operating Voltage (NMEA 2000® Connection)	8 - 32 Volts	DC Voltage
Power Consumption (NMEA 2000® Connection)	80mA	Maximum When Transmitting 100%
Load Equivalence Number (LEN)	0	NMEA 2000® Spec. (1 LEN = 50 mA)
Reverse Battery Protection (NMEA 2000® Connection)	Yes	Indefinitely
Load Dump Protection (NMEA 2000® Connection)	Yes	Energy Rated per SAE J1113

### Mechanical

Parameter	Value	Comment
Overall Dimensions (DxWxH)	6.02" x 9.76" x 1.73" (153mm x 248mm x 44mm)	Excluding Connectors and Wall Brackets
Weight	4.6 lbs (2.1kg)	
Chassis Material	Aluminum	
Mounting	Vesa 100, Wall Bracket, DIN Rail	Any Orientation

### Environmental

Parameter	Value
Operating Temperature	-10°C to 60°C
Operating Shock	Half-sine wave shock 3G; 11 ms; 3 shocks per axis
Operating Vibration	MIL-STD-810F 514.5C-2



Copyright 2015 Maretron, LLP. All rights reserved. As Maretron is constantly improving its products, all specifications are subject to change without notice. Maretron's products are designed to be accurate and reliable; however, they should be used only as aids to navigation and vessel monitoring, and not as a replacement for traditional navigation and vessel monitoring techniques. A prudent captain or navigator never relies on a single source for navigation or system monitoring information. "NMEA 2000" is a registered trademark of the National Marine Electronics Association.