

# N2KAnalyzer®

## NMEA 2000® Network Analysis Software

### User's Manual

Revision 1.4.0

Copyright © 2009 Maretron, LLP All Rights Reserved

Maretron, LLP  
9014 N. 23<sup>rd</sup> Ave #10  
Phoenix, AZ 85021-7850  
<http://www.maretron.com>

Maretron Manual Part #: M001501

## Table of Contents

|        |  |    |
|--------|--|----|
| 1      | Introduction.....                                  | 4  |
| 2      | System Requirements .....                          | 5  |
| 3      | Installation .....                                 | 5  |
| 4      | Tutorial .....                                     | 12 |
| 4.1    | Starting the software.....                         | 12 |
| 4.2    | Connecting to a NMEA 2000 Network.....             | 12 |
| 4.3    | Viewing Device Information .....                   | 14 |
| 4.4    | Boat Files .....                                   | 15 |
| 4.4.1  | Loading a Boat File .....                          | 15 |
| 4.4.2  | Saving a Boat File.....                            | 16 |
| 4.5    | Updating Software on a Device .....                | 17 |
| 4.6    | Viewing Device Properties.....                     | 18 |
| 4.7    | Configuring Devices .....                          | 22 |
| 4.8    | Viewing and Changing Installation Description..... | 23 |
| 4.9    | Viewing NMEA 2000 Messages .....                   | 24 |
| 4.9.1  | Using the Transmitted PGNs Window.....             | 24 |
| 4.10   | Analyzing NMEA 2000 Instancing .....               | 25 |
| 5      | Window Elements.....                               | 27 |
| 5.1    | Menus.....   | 27 |
| 5.1.1  | File .....   | 27 |
| 5.1.2  | Setup .....  | 28 |
| 5.1.3  | Analyze .....                                      | 29 |
| 5.1.4  | Update .....                                       | 30 |
| 5.1.5  | Configure .....                                    | 30 |
| 5.1.6  | Web .....  | 30 |
| 5.1.7  | Help .....   | 31 |
| 5.1.8  | User's Manual.....                                 | 31 |
| 5.1.9  | About N2KAnalyzer® .....                           | 31 |
| 5.2    | Toolbar .....                                      | 31 |
| 5.3    | Device List Window .....                           | 31 |
| 5.3.1  | Expand.....  | 32 |
| 5.3.2  | Node Address .....                                 | 32 |
| 5.3.3  | Manufacturer.....                                  | 33 |
| 5.3.4  | Mfg Model ID.....                                  | 33 |
| 5.3.5  | Mfg Model Version .....                            | 33 |
| 5.3.6  | Mfg Serial Number .....                            | 33 |
| 5.3.7  | Source .....                                       | 33 |
| 5.3.8  | Unique Instance .....                              | 33 |
| 5.3.9  | Current Software.....                              | 33 |
| 5.3.10 | Available Software.....                            | 33 |
| 5.3.11 | Install Description #1 .....                       | 33 |
| 5.3.12 | Install Description #2 .....                       | 34 |
| 5.3.13 | Mfg Information.....                               | 34 |
| 5.3.14 | Device Class.....                                  | 34 |
| 5.3.15 | Device Function .....                              | 34 |

|        |                                     |    |
|--------|-------------------------------------|----|
| 5.3.16 | Device Instance .....               | 34 |
| 5.3.17 | System Instance .....               | 34 |
| 5.3.18 | NMEA 2000 Version .....             | 34 |
| 5.3.19 | NMEA 2000 Certification Level ..... | 34 |
| 5.3.20 | MFG Product Code .....              | 34 |
| 5.3.21 | LEN .....                           | 34 |
| 5.4    | Device Channel Information .....    | 34 |
| 5.4.1  | Hardware Channel .....              | 35 |
| 5.4.2  | Indicator .....                     | 35 |
| 5.4.3  | Source .....                        | 35 |
| 5.4.4  | Instance .....                      | 35 |
| 5.4.5  | Label .....                         | 35 |
| 5.5    | Status Bar .....                    | 35 |
| 5.5.1  | Status Message Area .....           | 35 |
| 5.5.2  | Connection Status Indicator .....   | 35 |
| 5.5.3  | COM Port Selection Indicator .....  | 36 |
| 5.5.4  | Caps Lock Indicator .....           | 36 |
| 5.5.5  | Num Lock Indicator .....            | 36 |
| 5.5.6  | Scroll Lock Indicator .....         | 36 |
| 6      | Troubleshooting .....               | 36 |
| 7      | Technical Support .....             | 37 |

## **1 Introduction**

N2KAnalyzer<sup>®</sup> software is a powerful PC-based tool for analyzing, troubleshooting, and upgrading NMEA 2000 networks. The N2KAnalyzer<sup>®</sup> software, when installed on a Windows PC and used in conjunction with an intelligent NMEA 2000 gateway, such as the Maretron USB100, can be used to analyze the performance of NMEA 2000 networks, troubleshoot NMEA 2000 networks which are not functioning correctly, and update firmware on Maretron NMEA 2000 devices. N2KAnalyzer<sup>®</sup> can be used on an operating NMEA 2000 network, whose state can be captured into a file and used for later analysis, or can be used offline to analyze the saved network state, allowing a user to save state of a network and send it to a technical expert for analysis.

### **Features:**

- List all NMEA 2000 devices on the network
- Display a wealth of following information for each device:
  - Node Address
  - Manufacturer
  - Manufacturer Model ID
  - Manufacturer Model
  - Manufacturer Serial Number
  - Source
  - Unique Instance
  - Label
  - Current Software
  - Available Software
  - Installation Description
  - Manufacturer Information
  - NMEA 2000 Device Function
  - NMEA 2000 Device Class
  - Manufacturer Model (Hardware) Version
  - NMEA 2000 Industry Group
  - NMEA 2000 Unique Number
  - NMEA 2000 Device Instance
  - NMEA 2000 System Instance
  - NMEA 2000 Product Code
  - NMEA 2000 Database Version
  - NMEA 2000 Certification Level
  - NMEA 2000 Load Equivalency
  - Transmitted PGN List
  - Received PGN List
- For devices supporting multiple channels, display the following information for each device, as appropriate:
  - Hardware Channel
  - Indicator
  - Source
  - Instance

- Label
- Display NMEA 2000 messages transmitted by each device in an easy-to-understand, human-readable format
- Modify Installation Description information on devices which support user-programming of this information
- Modify source and instance information on devices which support user-programming of this information
- Analyze the devices on the network and their transmitted data to ensure that there are no instancing conflicts which can cause “bouncing needles” on displays
- Program label information on devices which support user-programming of this information to assign meaningful text strings to every device and channel
- Configure/Calibrate Maretron devices and select devices from other manufacturers
- Update firmware on supported Maretron NMEA 2000 devices
- Update N2KAnalyzer® and its available firmware images over the internet

## 2 System Requirements

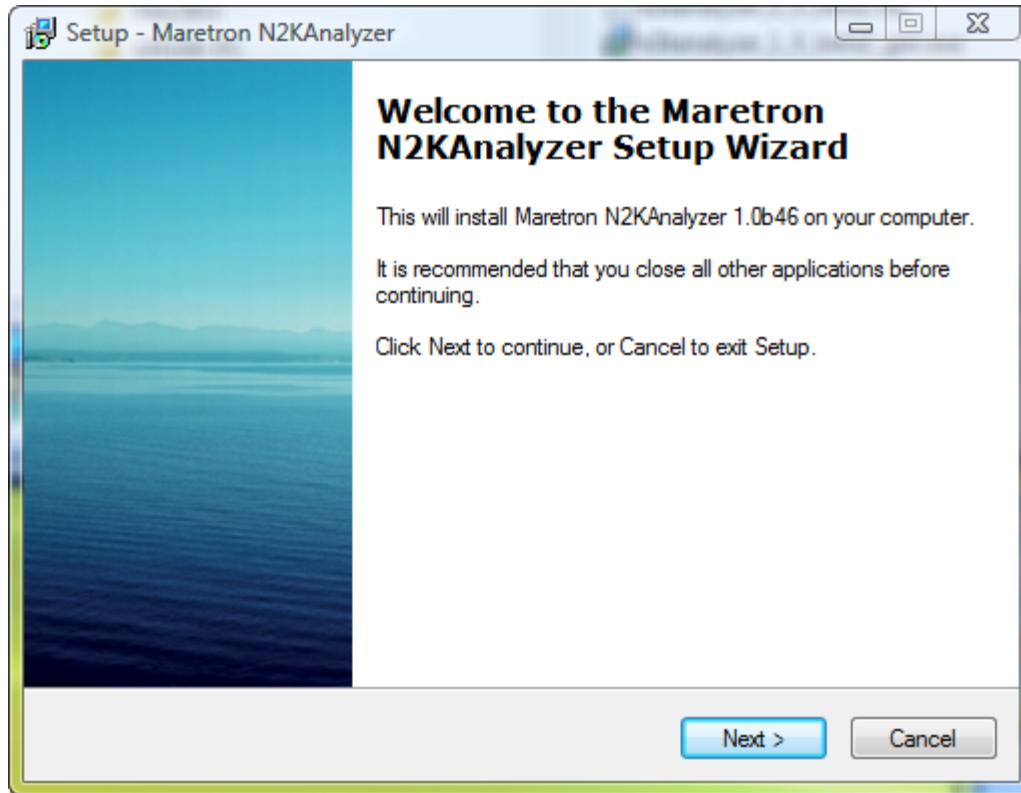
- Personal Computer running Microsoft Windows 2000, XP, or Vista
- Gateway to NMEA 2000 Network (Maretron USB100)
- 256 MB RAM
- 30 MB Hard Disk Space
- Internet connection

## 3 Installation

The N2KAnalyzer® may be obtained by downloading from the Maretron website at <http://www.maretron.com/downloads>

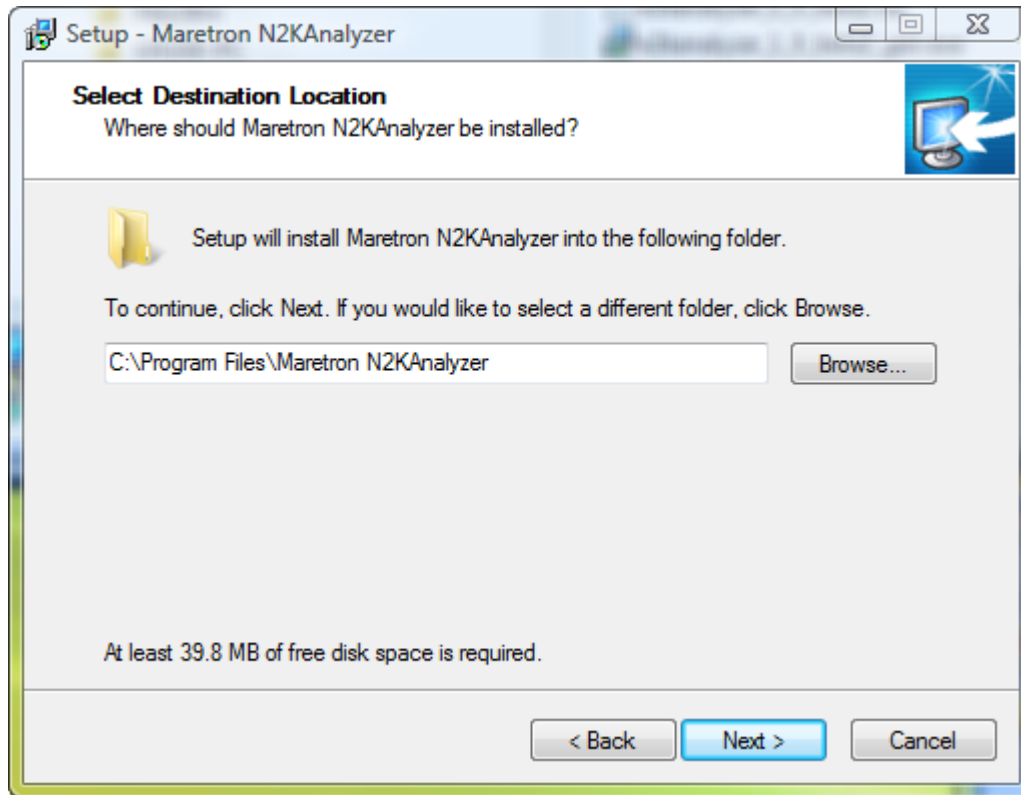
The installer for the N2KAnalyzer® is packaged as an executable file. To install N2KAnalyzer®, download the N2KAnalyzer® installer from the internet at the link given above and save the executable file to your hard drive. Then, run the N2KAnalyzer® installer as you would any other program.

The N2KAnalyzer® Installer will display the following screen:



**Figure 1 -- N2KAnalyzer<sup>®</sup> Installation Introduction Screen**

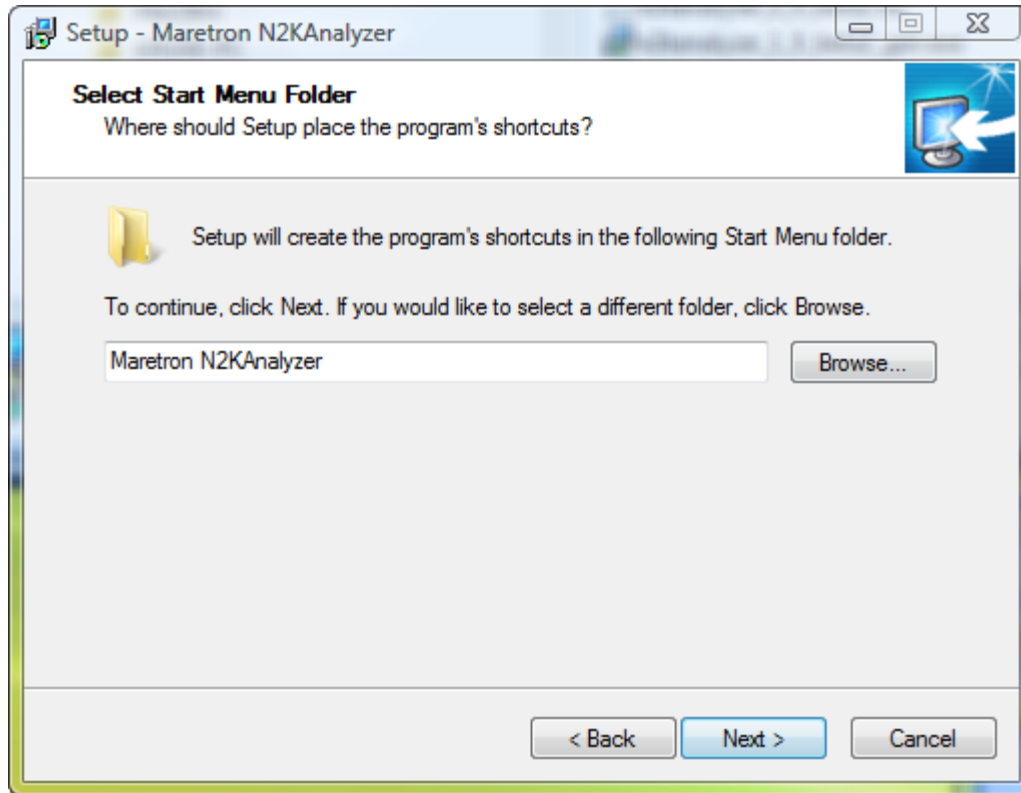
Click the *Next* button to continue. The N2KAnalyzer<sup>®</sup> Installation program will then display the *Select Destination Location* screen.



**Figure 2 -- Select Destination Location Screen**

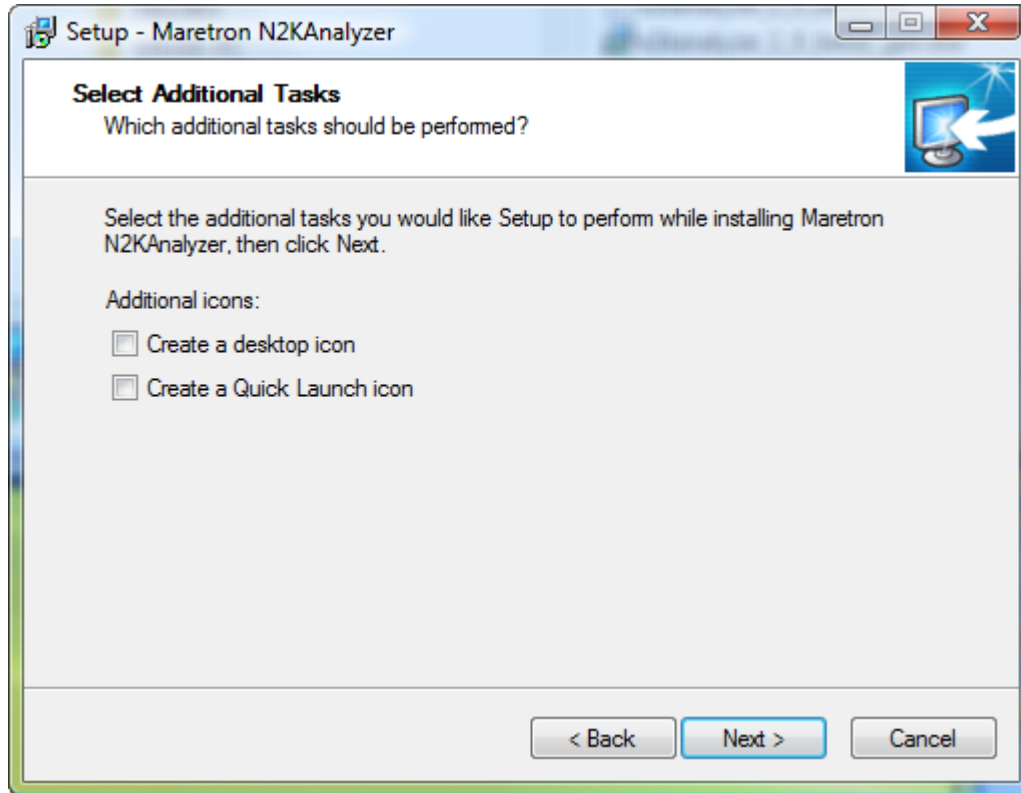
By browsing or by typing in the name directly, enter then name of directory in which you wish the software to be installed, then click the *Next* button to continue to the next screen.

The N2KAnalyzer® Installer software will then display the *Select Start Menu Folder* screen.



**Figure 3 -- Select Start Menu Folder Screen**

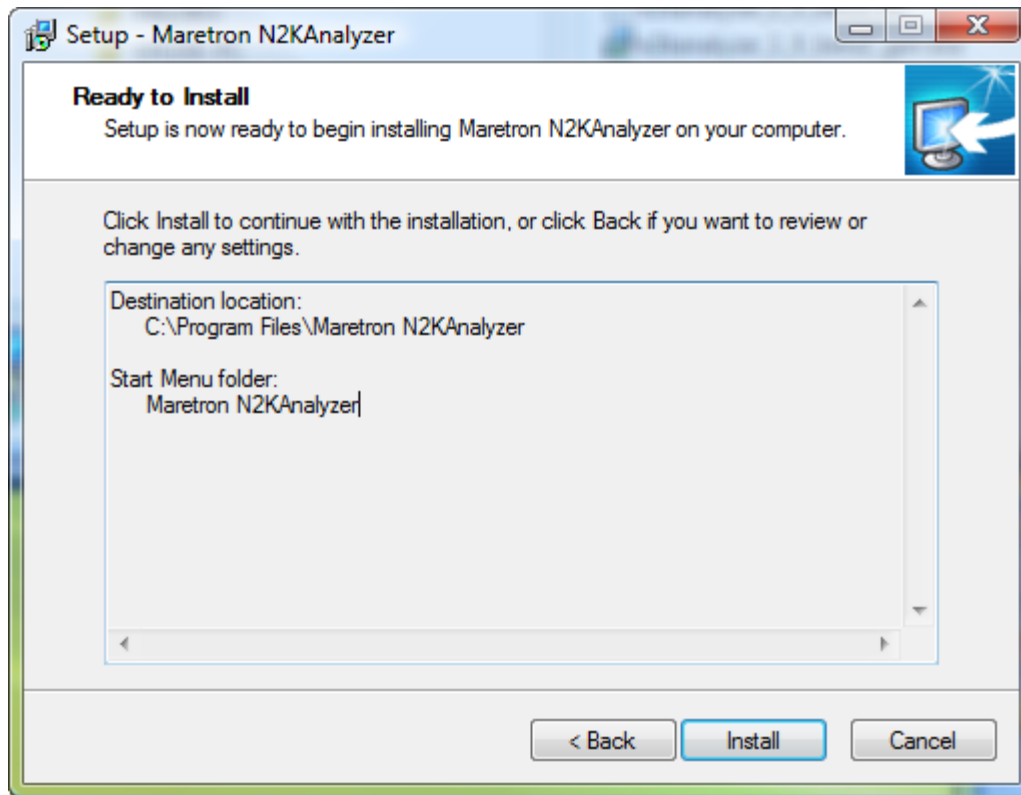
This screen gives you the opportunity to change the default start menu folder into which the N2KAnalyzer's shortcuts will be placed. Once you are satisfied with the name of the start menu folder, click the *Next* button to continue. The N2KAnalyzer<sup>®</sup> installation program will then display the *Select Additional Tasks* screen.



**Figure 4 -- Select Additional Tasks Screen**

This screen will allow you to choose optional tasks for the N2KAnalyzer® Installation program to perform while it is installing the software. You may optionally select the creation of a desktop icon or a quick launch icon to start the N2KAnalyzer® software in addition to the standard start menu launch item. Once you have made your selections by clicking on the appropriate checkboxes, click the *Next* button to continue to the next screen.

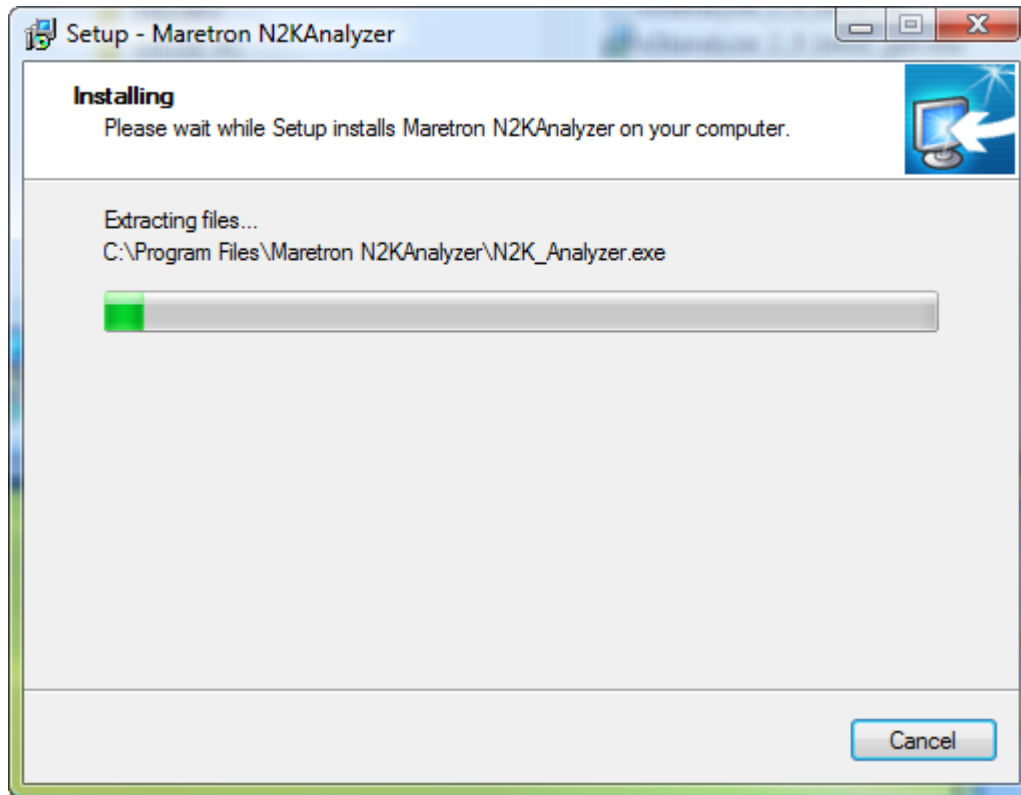
The N2KAnalyzer® Installation software will then display the *Ready to Install* screen.



**Figure 5 -- Ready to Install Screen**

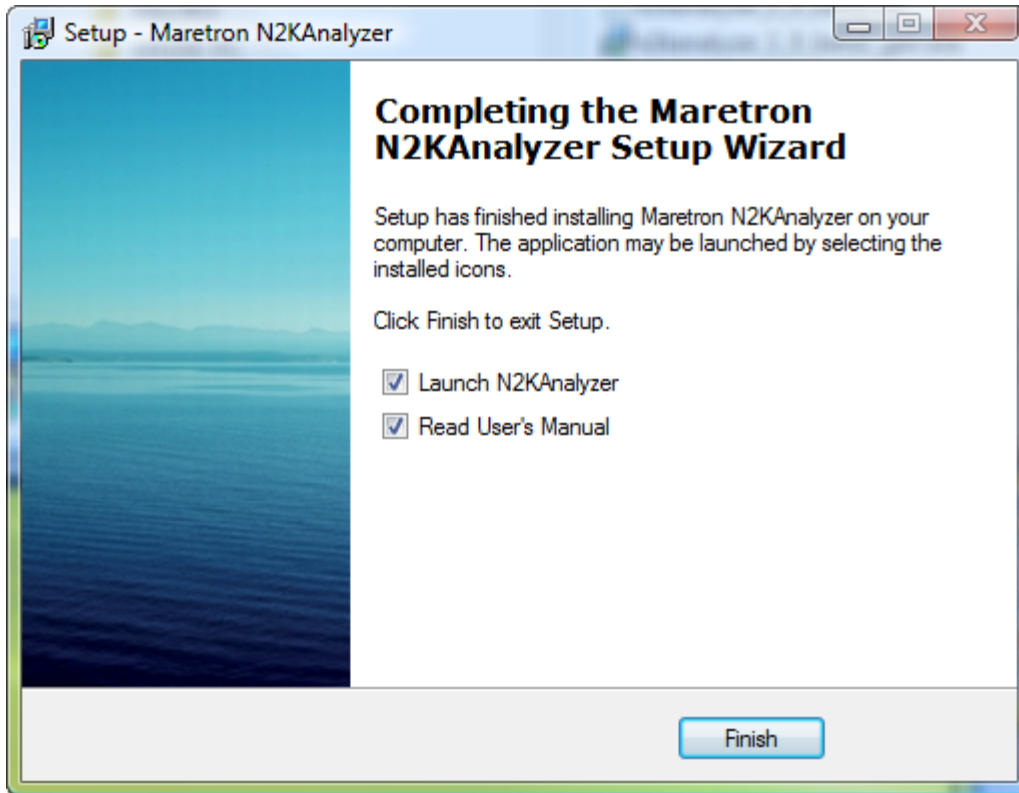
This screen displays a summary of the options you have chosen up to this point in the installation process. If you wish to change any options at this time, click the *Back* button which will take you back to previous screens in the installation process, where you may make the desired changes. Once you are satisfied with the installation options you have chosen, click the *Install* button to begin copying the program files to the final locations.

The N2KAnalyzer<sup>®</sup> Installation software will display the *Installing* screen to show the status of the installation.



**Figure 6 -- Installing Screen**

Once the installation of the software is finished, the N2KAnalyzer® Installation program will display the *Completing the N2KAnalyzer Setup Wizard* screen.



**Figure 7 -- Completing the Maretron N2KAnalyzer<sup>®</sup> Setup Wizard Screen**

This screen gives you the option to launch the N2KAnalyzer<sup>®</sup> software. Click the “Launch N2KAnalyzer<sup>®</sup>” checkbox if you wish to start the N2KAnalyzer<sup>®</sup> software after the installation process is complete.

This screen also gives you the option to read the *N2KAnalyzer<sup>®</sup> User's Manual*. Click the “Read User's Manual” checkbox if you wish to open the *N2KAnalyzer<sup>®</sup> User's Manual* after the software installation process is complete.

Finally, click the *Finish* button to complete the software installation process. The N2KAnalyzer<sup>®</sup> software is now ready to use.

## **4 Tutorial**

### **4.1 Starting the software**

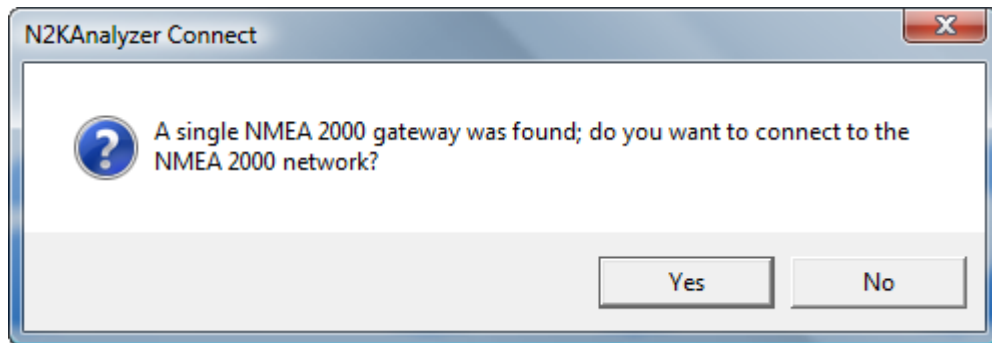
You may start the N2KAnalyzer<sup>®</sup> software in one of three ways:

- Selecting the *All Programs*→*Maretron N2KAnalyzer* menu item from the Start Menu
- Clicking the quick launch icon, if you requested one to be created during installation, or
- Clicking the desktop icon, if you requested one to be created during installation,

### **4.2 Connecting to a NMEA 2000 Network**

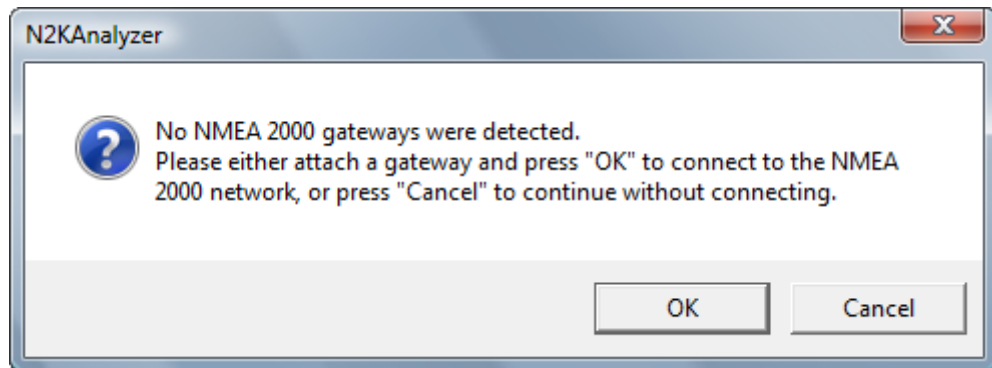
When you start the N2KAnalyzer<sup>®</sup> software, the software will look for a NMEA 2000 gateway. If it finds a single gateway, or if the gateway you used previously is available, the

N2KAnalyzer® software will ask you if you wish to connect to the NMEA 2000 network using that gateway.



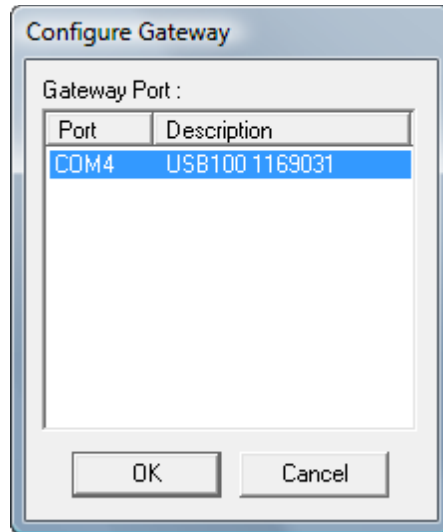
**Figure 8 -- N2KAnalyzer® Connect Screen**

If no connected gateways are detected on the computer, you are given the option to connect a gateway and retry the gateway detection process by clicking the *OK* button, or you may continue the program without going online (for example, to examine a previously saved boat file) by clicking the *Cancel* button.



**Figure 9 -- Screen Displayed When No Gateways are Detected**

If you choose to connect a gateway, then after you connect the gateway and press the *OK* button, you are presented with the *Configure Gateway* dialog box in order to confirm your gateway selection.



**Figure 10 -- Gateway Configuration Screen**

Click on the desired gateway to select it, and then click on the *OK* button to confirm your selection and enter online mode.

## 4.3 Viewing Device Information

Once the N2KAnalyzer<sup>®</sup> software has connected to the N2K network, or if the N2KAnalyzer<sup>®</sup> software is operating disconnected from the N2K network with a loaded boat file, then the device list window is filled with information about the NMEA 2000 devices on the bus.

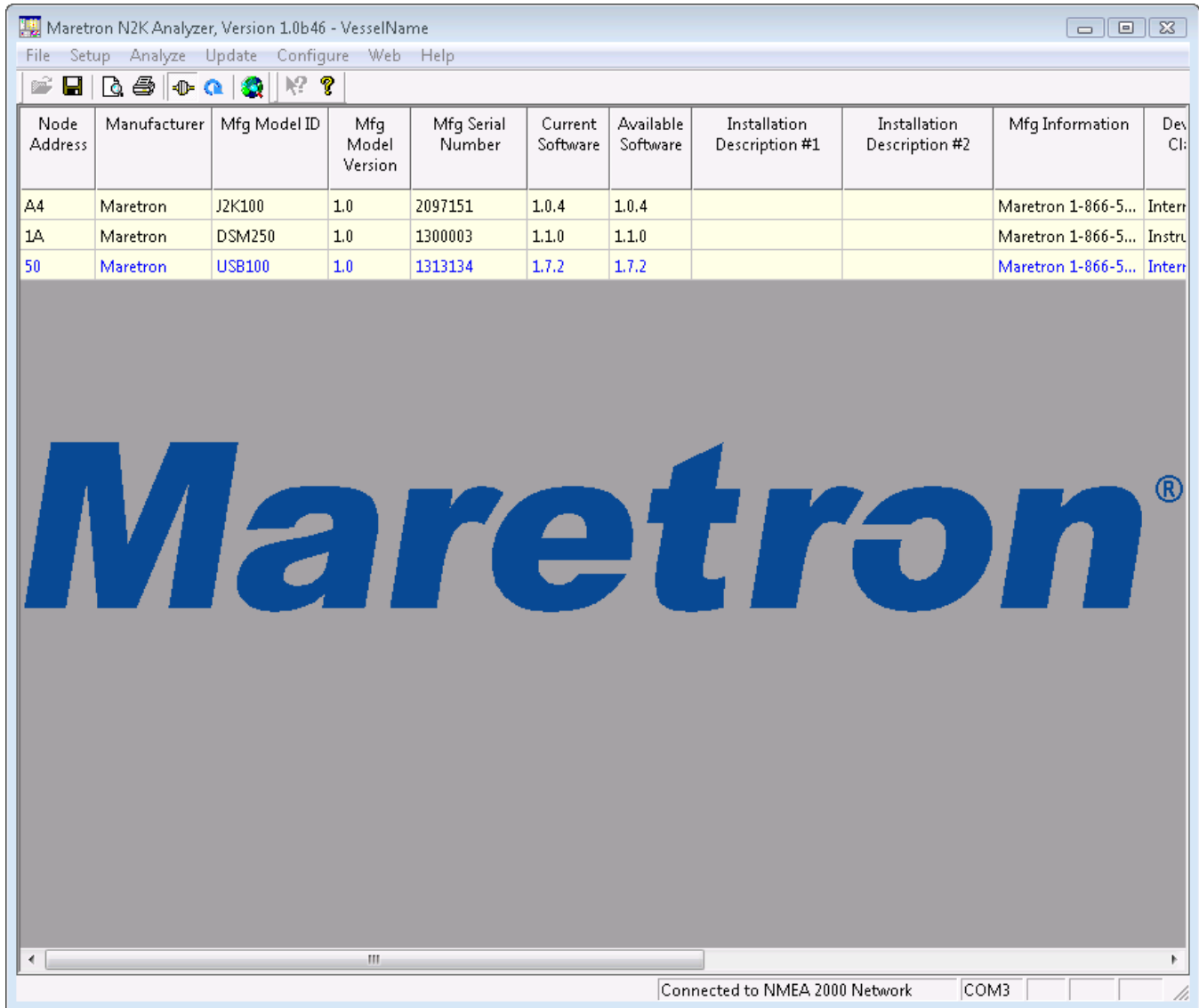


Figure 11 -- Main Program Window

## 4.4 Boat Files

N2KAnalyzer® has the capability to store the state of a network and all of its devices to an external file, and also to load the state of a network and all of its devices from an external file. These files are called “boat files”, and are usually named with the name of the vessel followed by a “.net” extension. If you are on a vessel with some NMEA 2000-related issue, you can start N2KAnalyzer® and save a boat file, which you can then e-mail or otherwise transfer to someone at a remote location for analysis.

### 4.4.1 Loading a Boat File

While working disconnected from the NMEA 2000 bus, you may load a boat file that was saved previously and examine its contents using the N2KAnalyzer® software. Selecting the *File-*

>Open... menu option or clicking on the *Open File* toolbar button will cause the following dialog screen to be displayed.

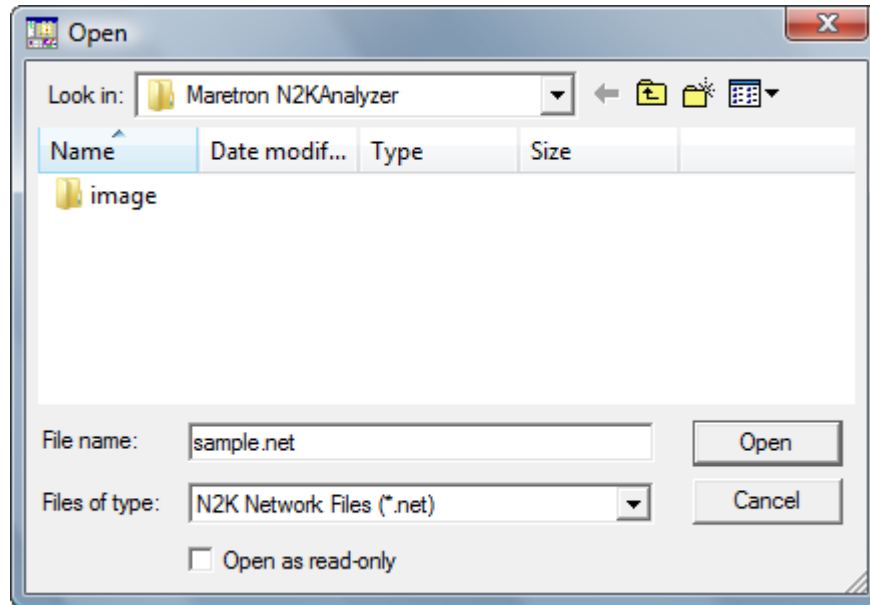


Figure 12 -- Boat File Open Dialog Box

Browse to the boat file you wish to load or type in the name of a boat file you wish to load and then click the *Open* button to cause the boat file to be loaded.

## 4.4.2 Saving a Boat File

While connected to a NMEA 2000 bus, you may wish to save information about the network so that you or someone else can analyze it later using the N2KAnalyzer® software. Selecting the *File->Save As...* menu item will cause the *File Save* dialog box to be displayed and will cause all currently available network information to be saved to a boat file.

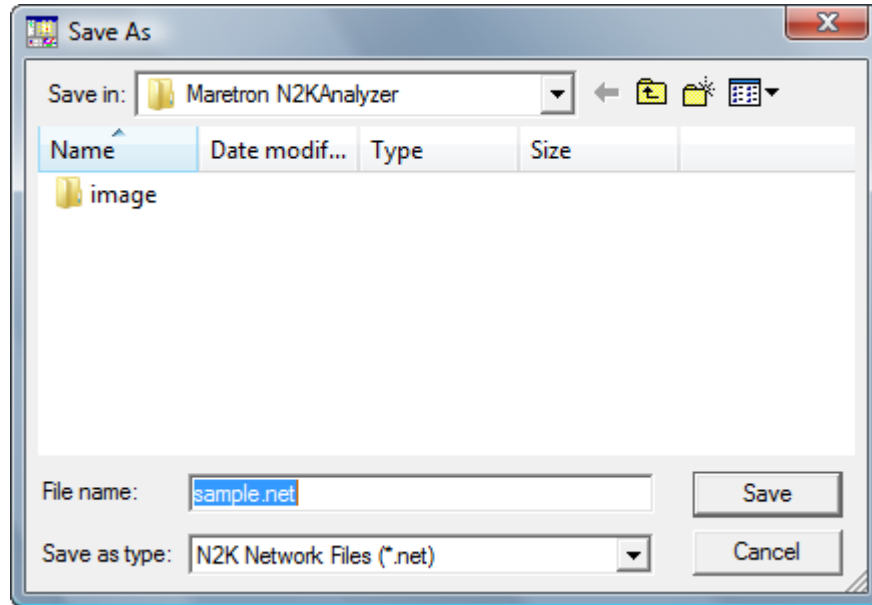


Figure 13 -- Boat File Save Dialog Box

Browse to the directory in which you wish to save the boat file, and then type the desired filename under which to save the boat file. Finally, click the **Save** button to save the file to the hard drive.

## 4.5 Updating Software on a Device

If the N2KAnalyzer® software has a version of software for a device that is newer than the version currently on the device, then the version number in the *Current Software* column of the device list window will be highlighted in red. You can update the software on the device to the latest available version in one of two ways:

- Select the device in the device list window by clicking on it, and then select the *Update->Selected Device's Software...* menu item, or
- Select the device in the device list window by clicking on it, and then right-click on the device and select the *Update Selected Device's Software* menu item from the pop-up context menu that appears.

Once the update process starts, the N2KAnalyzer® software will display a window describing the status of the device software update process.

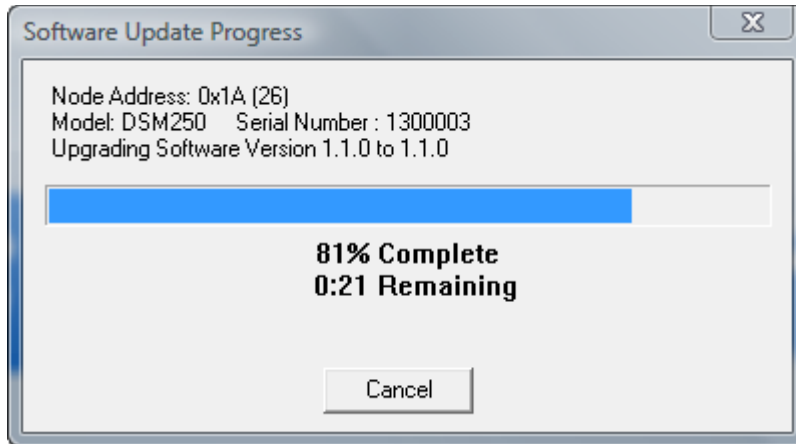


Figure 14 -- Firmware Update Progress Window

Once the firmware update process has completed, the N2KAnalyzer<sup>®</sup> software will then display another window summarizing the results of the firmware update process.

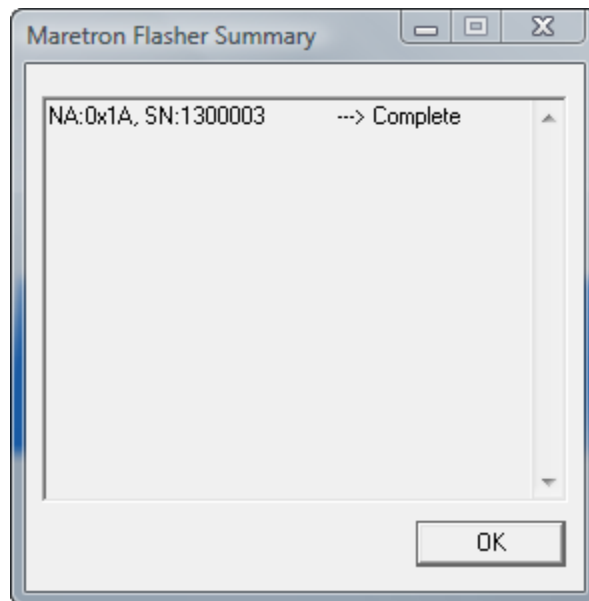
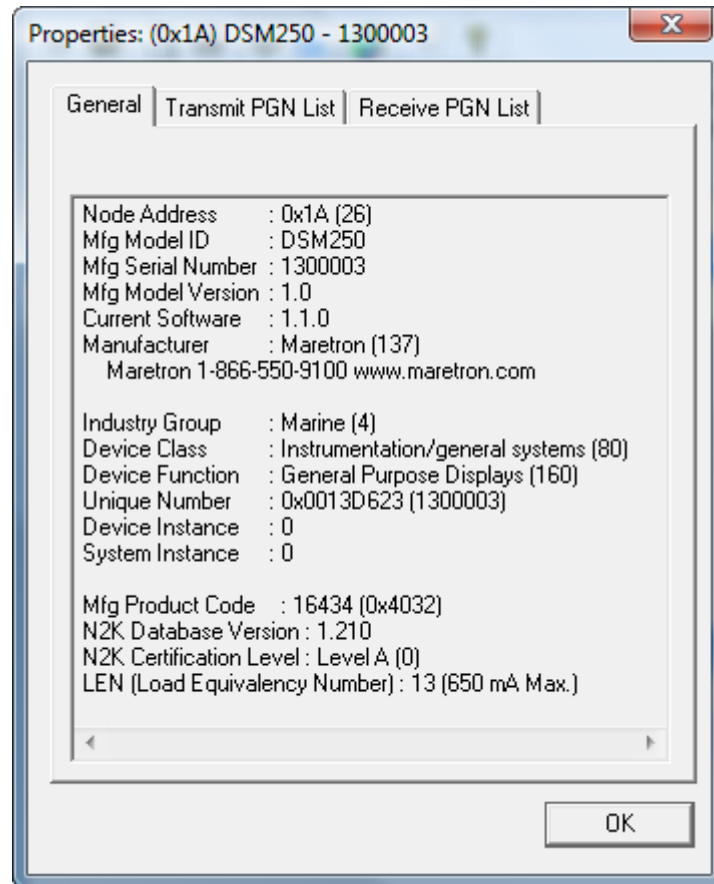


Figure 15 -- Firmware Update Summary Window

## 4.6 Viewing Device Properties

In order to view more information about a device than is displayed in the device list window, select the device in the device list window and then either select the *Analyze->Device Properties* menu item or right-click on the highlighted device and select *Device Properties* from the pop-up context menu that appears as a result.

The Device Properties window has three tabs: General, Transmit PGN List, and Received PGN List. The General tab is shown in the figure below.



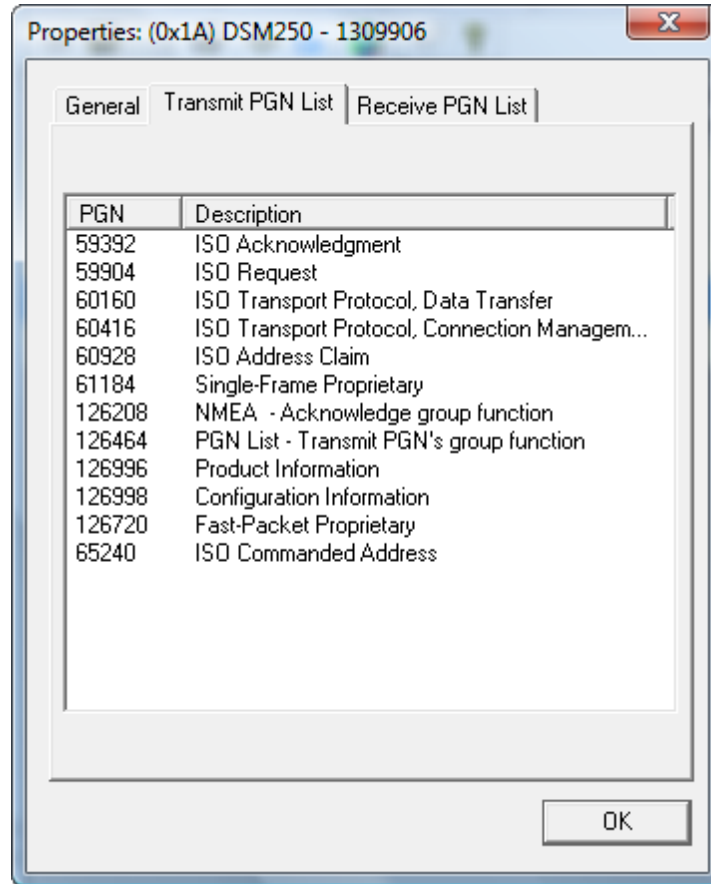
**Figure 16 -- Device Properties Window: General Tab**

The General tab displays the following information:

- **Node Address** – Each device on an NMEA 2000 network claims a node address between the value of 0 (0x0 hexadecimal) and 251 (0xFB hexadecimal). These node addresses may change as new devices are added to the network. This column shows the node addresses claimed by the device.
- **Mfg Model ID** – This shows the Device Model (sometimes known as Model ID, Model Number, or Model Name) reported by the device.
- **Mfg Serial Number** – This shows the serial number reported by the device.
- **Mfg Model Version** – This shows the hardware version number reported by the device.
- **Current Software** – This shows the firmware version number reported by the device.
- **Manufacturer** – This column shows the manufacturer reported by each device. The manufacturer's names are read from a table in the N2KAnalyzer® software which translates the manufacturer's code reported by the device. If a new NMEA 2000 manufacturer has been added since the N2KAnalyzer® software was release, this will show up as a numeric value. If this happens, please either
  - Update your N2KAnalyzer® software, or
  - Check the NMEA website for the current list of manufacturer codes.

- **Industry Group** – This shows the industry group reported by the device. Maretron products are in the Marine industry group. Device Class and Device Function definitions depend on the value on this field.
- **Device Class** – This shows the NMEA 2000 device class as reported by the device.
- **Device Function** – This shows the NMEA 2000 device function (this is a more-specific indication of the device function within the context of the device class) reported by the device.
- **Unique Number** – This shows a number for the specific device. The combination of this number, the Device Class, and the Device Function are guaranteed to be unique.
- **Device Instance** – This shows the electronic control instance number. This is used by some receiving devices to distinguish one set of data from another.
- **System Instance** – This shows the system instance number. This is used by some receiving devices to distinguish one group of devices of data from another.
- **Mfg Product Code** – This shows the NMEA 2000 product code for the device. This number uniquely identifies the manufacturer and model of the device.
- **N2K Database Version** – This shows the version of the NMEA 2000 database that is supported by this device.
- **N2K Certification Level** – This shows the certification level of this device. Current certification levels are “A” and “B”.
- **LEN (Load Equivalency Number)** – This shows the number of loads that this device presents to the network. This can be used for power supply and cable sizing. Each load represents 50 mA of current consumption.

The Transmit PGN List shows a list of the messages that this device can transmit. This function is required for devices with Certification Level “A”. Devices with Certification Level “B” may not transmit this information.



**Figure 17 -- Device Properties Window: Transmit PGN List Tab**

The Receive PGN List shows a list of the messages that this device is capable of recognizing. This function is required for devices with Certification Level “A”. Devices with Certification Level “B” may not transmit this information.

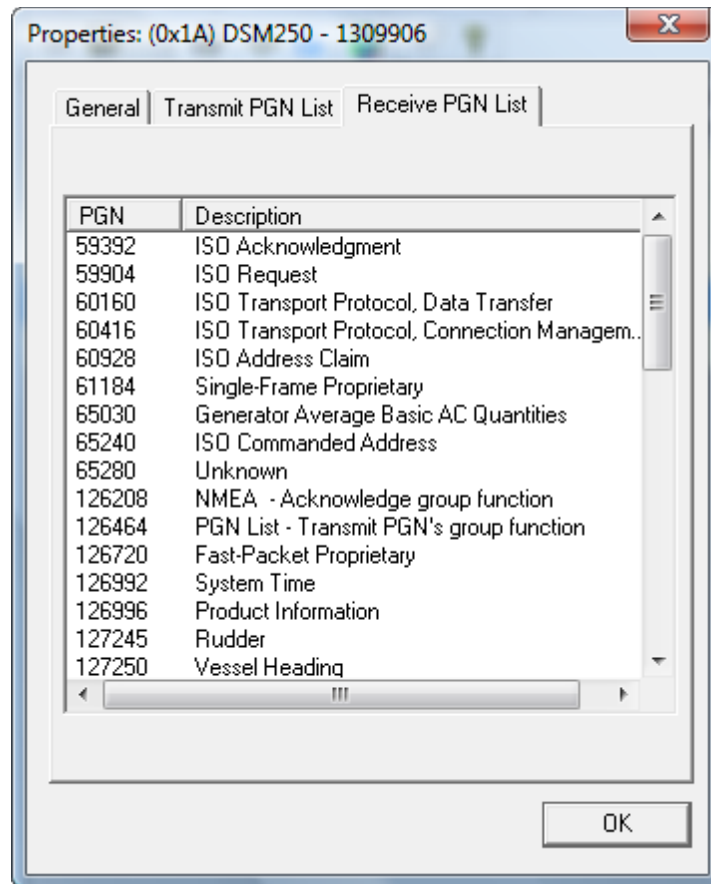


Figure 18 -- Device Properties Window: Received PGN List Tab

## 4.7 Configuring Devices

N2KAnalyzer® allows you to configure information common to all devices directly in the device list, much as you would edit a spreadsheet. Items in the device list which you can change have a white background.

For more detailed configuration, you may configure devices using the built-in DSM250 emulator, which you can access by selecting the *Analyze->DSM250 Viewing...* menu item. This emulator operates exactly the same as the Maretron DSM250 Multifunction Display, and is shown in Figure 19 below. Please refer to the *Maretron DSM250 Multifunction Display User's Manual* for details on configuring particular devices.



Figure 19 – DSM250 Viewing Window

## 4.8 Viewing and Changing Installation Description

You can view and change the installation description information which can be programmed into NMEA 2000 devices which support this capability by selecting the *Configure->Installation Descriptions* menu item. The Installation Descriptions dialog box shows the Installation Description #1 and Installation Description #2 fields. These are free-form text fields that may be programmed by the installer in devices that support field programming of this information. To set the value of one of these fields, type the desired information into the text box and click the OK button once you are finished. This will cause the entered value to be permanently programmed into the device's non-volatile memory.

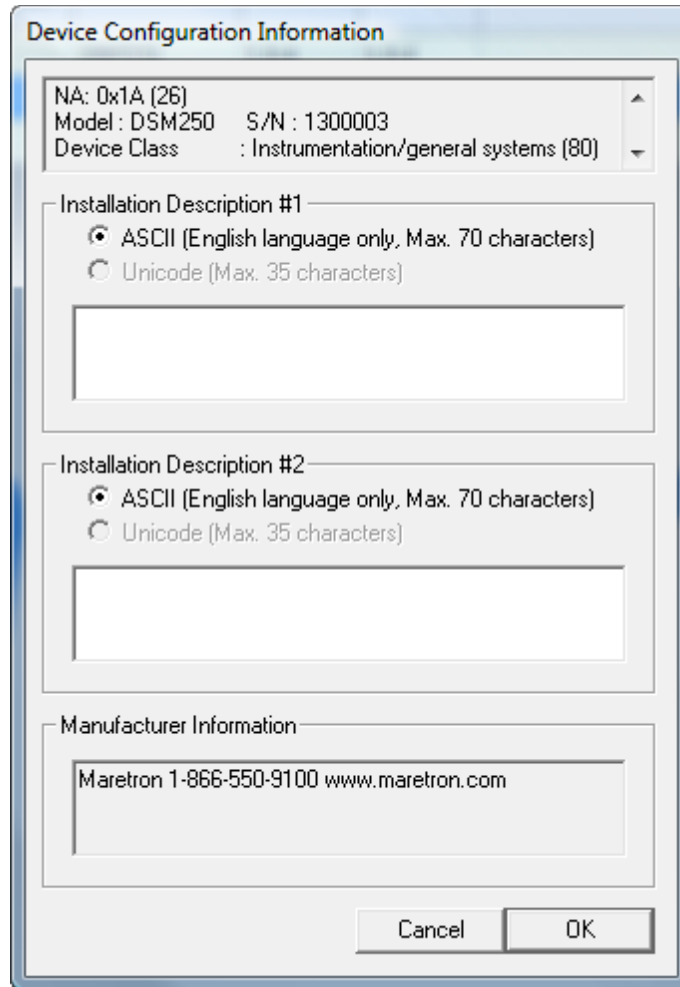


Figure 20 -- Device Properties Window: Installation Description Tab

## 4.9 Viewing NMEA 2000 Messages

### 4.9.1 Using the Transmitted PGNs Window

You can view the messages transmitted by a particular device on the network by first left-clicking on the device in the device list window, and then either selecting the *Analyze->Transmitted PGNs* menu item or by right-clicking on the device and selecting the *Analyze Transmitted PGNs* menu item from the pop-up context menu. A window appears listing the PGN's transmitted by the device. The contents of the window are updated in real time. The messages appear one line per message. You can click on the "+" icon on the left side of the message to expand it and show the contents of the individual message fields. Click once more to collapse the message display into a single line.

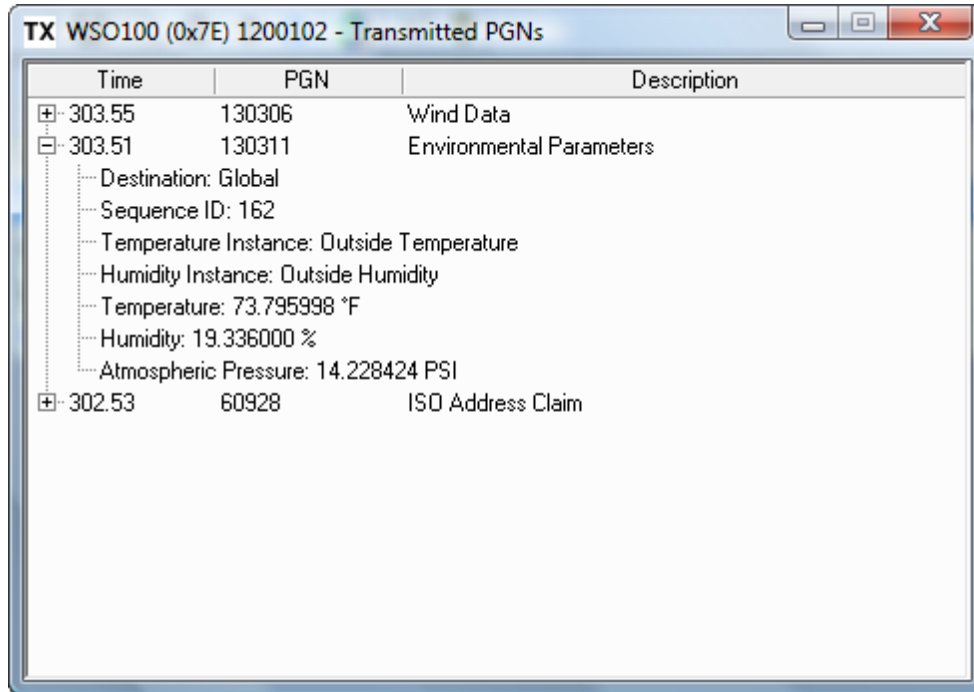


Figure 21 -- Transmitted PGNs Window

## 4.10 Analyzing NMEA 2000 Instancing

When configuring an NMEA 2000 network, it is important to ensure that all devices transmitting the same type of information (for example, Fuel tank level) are programmed with distinct instance numbers. This is so that a display device can correctly identify the source of the measurement.

There may be some cases where two devices with the same instance numbers is desirable, specifically, when redundancy is desired. For example, you may choose to install two GPS antennas for redundancy. In that case, if both GPS antennas

N2KAnalyzer® is capable of analyzing the device information and network traffic to determine whether any conflicts exist. You can run this analysis function by selecting *Analyze->Instancing* menu item. After you select that menu item, you will see an introductory dialog box (shown in Figure 22).

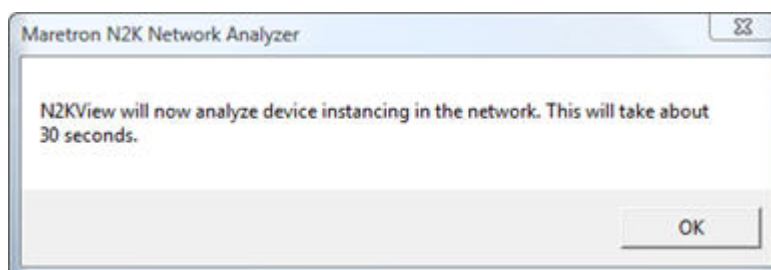
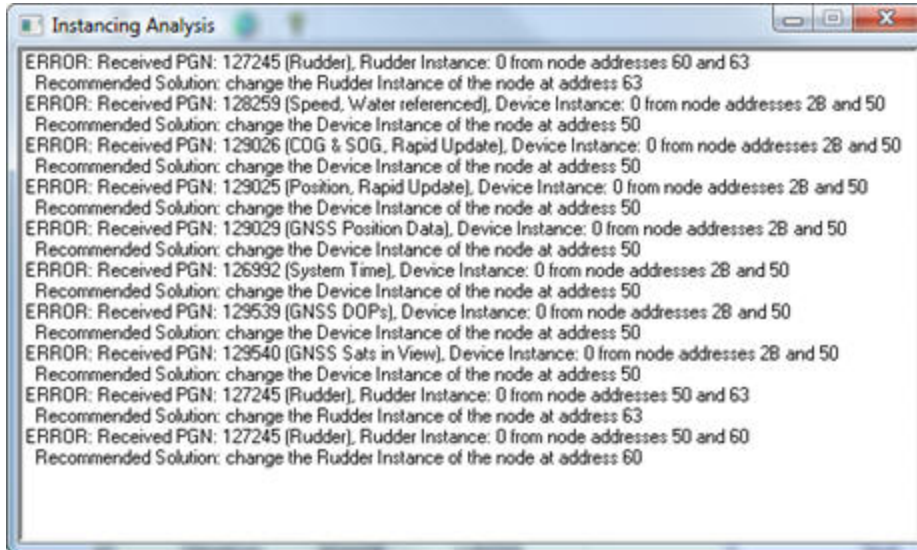


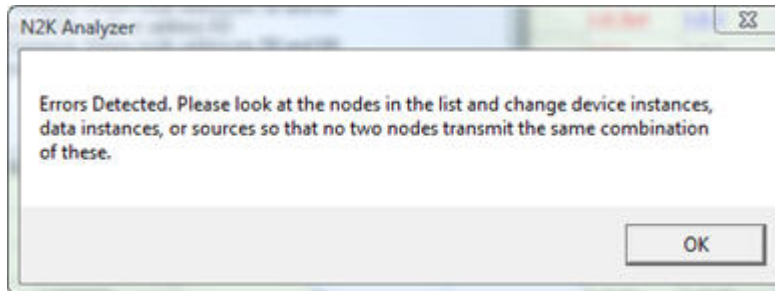
Figure 22 - Instancing Analyzer Introductory Dialog

Click the “OK” button to begin the analysis. Once you click “OK”, the dialog will close and the Instancing Analysis Results Window will appear. It will display any detected instancing conflicts as they occur, along with recommended actions to resolve the conflicts. The results window is shown in Figure 23 below.



**Figure 23 - Instancing Analysis Results Window**

The analysis will complete after 30 seconds have elapsed. Once the analysis has completed, a dialog box will appear indicating whether or not any conflicts were detected. Click the “OK” button to close the dialog box (shown in Figure 24 below).



**Figure 24 - Instancing Analysis Errors Detected Dialog**

Once you have completed instancing analysis, resolve any undesired conflicts by either performing the recommended actions, or by changing instance numbers and/or source types. Repeat this entire process until you do not have any unexpected conflicts.

## 5 Window Elements

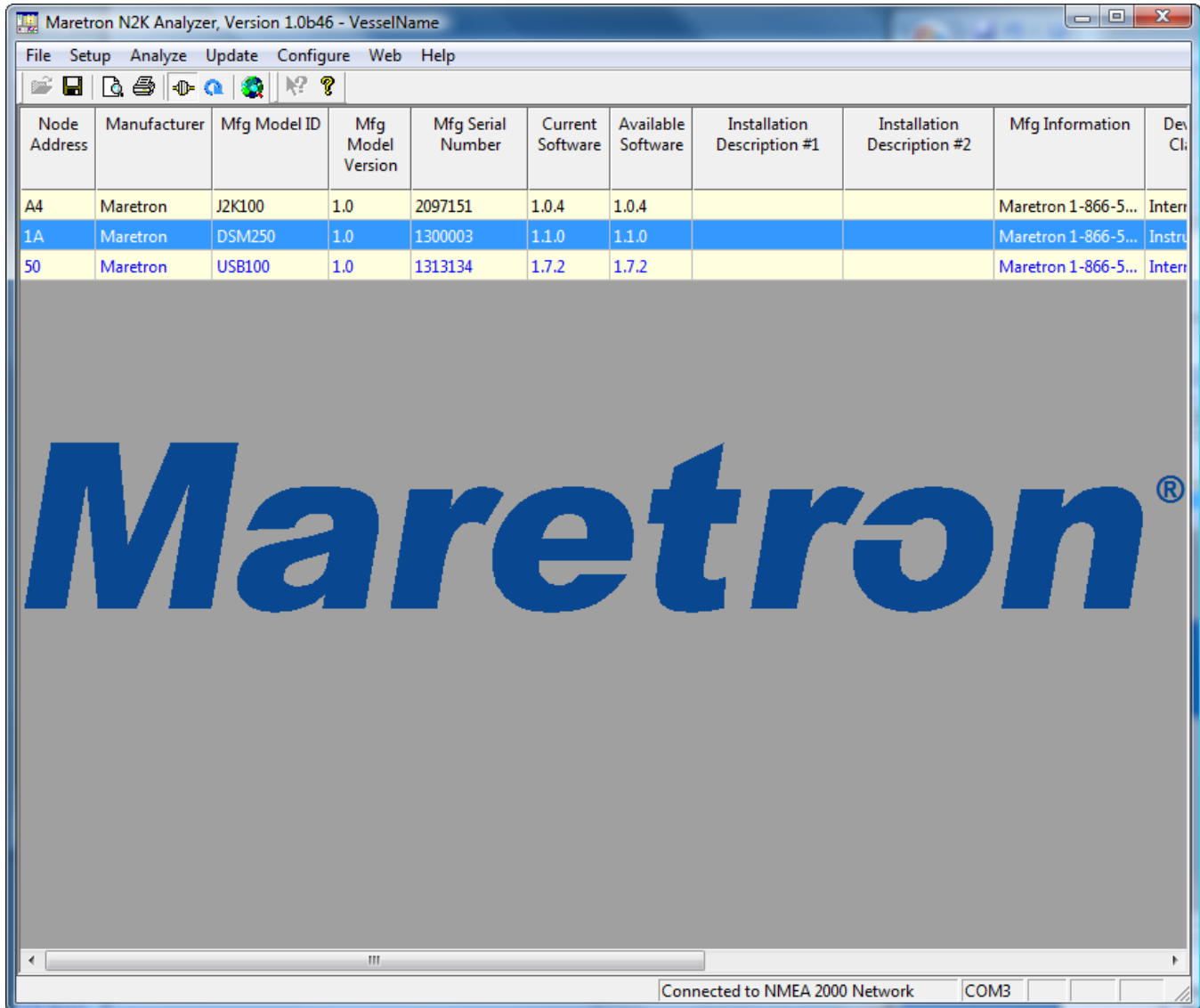


Figure 25 -- Window Elements

The following window elements are present in the N2KAnalyzer® software:

- Menu
- Toolbar
- Device List Window
- Status Bar

### 5.1 Menus

#### 5.1.1 File

##### 5.1.1.1 Open...

The File->Open... menu item allows you to open a "boat file".

### **5.1.1.2 Save As...**

Opens a window which allows you to choose the filename to which to save a "boat file". The "boat file" contains the current state of the network you are monitoring.

### **5.1.1.3 Print...**

Prints the current contents of the Device List Window to a printer.

### **5.1.1.4 Connect to NMEA 2000 Network**

Connects N2KAnalyzer<sup>®</sup> to the NMEA 2000 network through the currently selected NMEA 2000 gateway, and queries the attached NMEA 2000 network for devices and fills the device list table with this information.

### **5.1.1.5 Disconnect from NMEA 2000 Network**

Disconnects N2KAnalyzer<sup>®</sup> from the NMEA 2000 gateway. All information that was previously available from the attached NMEA 2000 network which N2KAnalyzer<sup>®</sup> was in online mode is still available.

### **5.1.1.6 Refresh**

Refreshes the device list window by asking all devices on the NMEA 2000 network to transmit their information.

### **5.1.1.7 Exit**

Changes from online mode to offline mode, if necessary, and exits N2KAnalyzer<sup>®</sup> completely.

## **5.1.2 Setup**

### **5.1.2.1 Software Update Directory...**

This opens a dialog box allowing you to select the directory which contains the software image files to use when updating Maretron equipment on the attached NMEA 2000 network.

### **5.1.2.2 Configure Gateway...**

This opens a dialog window allowing you to select a specific NMEA 2000 gateway to connect to when entering online mode.

### **5.1.2.3 Download Software Updates On Startup**

If checked, this selection causes N2KAnalyzer<sup>®</sup> to check for new versions of the program and device software every time it is started. If desired, you can disable this behavior by clicking on this selection to clear the checkmark. In either case, you can manually check for updates at any time by clicking on the *Web->Download Software Updates* menu selection.

### **5.1.2.4 Recover Device**

It is possible, but extremely rare, for a device to get into a state in which it cannot be accessed by N2KAnalyzer<sup>®</sup> in normal mode. An example of this is a device which is being programmed

with new firmware, and the firmware update process is aborted or fails for some reason. Subsequently, when you need to re-program the device, you are asked for a part number. If you supply the wrong part number, the device will get flashed with firmware intended for another device. The device will then appear unresponsive on the network. You can use the “Recover Device” menu option to place the device into a state in which you can program it with the correct firmware release.

### **5.1.2.5 Show Tips on Startup**

If checked, this selection causes N2KAnalyzer® to display a “tip of the day” when started.

### **5.1.2.6 Columns**

The columns selection opens a submenu which lists all of the available columns that can be displayed in the device list window. The columns that are currently enabled for display are denoted by a checkmark. To enable or disable a column for display, click on it in this menu.

## **5.1.3 Analyze**

### **5.1.3.1 Received PGNs**

This opens a window displaying the PGN's that the device reports as being able to receive, including a description of all the data fields.

### **5.1.3.2 Transmitted PGNs**

This opens a window displaying the transmitted PGN's from the selected device, including a timestamp and a description of all the data fields.

### **5.1.3.3 Device Properties**

This opens a window displaying information on the selected device, including general properties, the installation description fields, and a list of pgn's that the device reports that it transmits and receives.

### **5.1.3.4 Instancing**

This causes N2KAnalyzer® to scan the network information and traffic, searching for conflicting instancing information that may cause displays to report incorrect information. It will open a window that will display conflicts and recommendations for resolving the conflicts.

### **5.1.3.5 DSM250 Viewing...**

This opens a window containing an emulation of the Maretron DSM250 Multi-function display, which allows you to view a wide variety of data on the attached NMEA 2000 network. This menu item is available only in online mode.

### **5.1.4 Update**

#### **5.1.4.1 Selected Device's Software...**

This will update the software on the device that has been highlighted in the device list window to the most recent version. This menu item is available only in online mode.

### **5.1.5 Configure**

#### **5.1.5.1 Installation Descriptions**

This will enable you to change the installation descriptions fields of the selected device, provided that the device supports field modification of these fields. You can fill these fields with any desired data; for example, the location of the device, date installed, date calibrated, etc.

#### **5.1.5.2 Device Instance**

This will enable you to change the upper device instance and lower device instance fields of the device, provided that the device supports modification of these fields over the network (some devices provide instead the ability to modify these fields by DIP switches or rotary switches on the devices themselves; please consult the device's user manual for details).

#### **5.1.5.3 DSM250 Configuration...**

This opens a window containing an emulation of the Maretron DSM250 Multi-function display in configuration mode, which allows you to configure any Maretron devices on the attached NMEA 2000 network. Please refer to the *DSM250 User's Manual* for detailed instructions on configuration of NMEA 2000 devices. This menu item is available only in online mode.

#### **5.1.5.4 Restore Factory Defaults**

This will return the currently selected device to the condition it was in when it was shipped from the factory, except that the device will retain its current node address.

### **5.1.6 Web**

#### **5.1.6.1 Download Software Updates**

Connects to the Maretron website and checks whether a newer version of N2KAnalyzer<sup>®</sup> software or updates to device software are available. If newer software is available, N2KAnalyzer<sup>®</sup> will prompt you to download and install the new version.

#### **5.1.6.2 Maretron Website**

Opens your default web browser and directs it to the Maretron home page, where you can find information about Maretron products and solutions.

### 5.1.6.3 Knowledge Base

Opens your default web browser and directs it to Maretron's support knowledge base, where you can find answers to questions about the installation, configuration, and use of Maretron products.

### 5.1.7 Help

### 5.1.8 User's Manual

Displays this user's manual.

### 5.1.9 About N2KAnalyzer®

Displays a dialog box with information about N2KAnalyzer®, including the current version number and copyright information.

## 5.2 Toolbar



Figure 26 – Toolbars

The following icons appear on the toolbar, in order from left to right:

- **Open** (same as *File->Open...*): Loads a network configuration from a boat file.
- **Save** (same as *File->Save As...*): Saves the current network configuration to a boat file.
- **Print**: Prints the contents of the Device List Window.
- **Connect/Disconnect**: Connects N2KAnalyzer® to a NMEA 2000 network if it is currently disconnected from the network, and vice versa.
- **Refresh**: Causes N2KAnalyzer® to refresh the state of the Device List window.
- **Web**: This feature is not yet implemented.
- **About**: Displays the About window.

## 5.3 Device List Window

The device list window shows information on all devices currently connect to the NMEA 2000 network. The N2KAnalyzer® software broadcasts a request to all nodes on the NMEA 2000 network, which in turn broadcast their identifying information. It then fills the device list window with information as it is received from the other devices on the network. This process repeats every ten seconds, and the device list window contents are updated accordingly.

The text for each device is normally displayed in black. Different colors are used to signify different characteristics of devices:

- Blue – identifies the gateway that is being used by the N2KAnalyzer® software
- Red – identifies that a new revision of firmware is available for that device.
- Grey – device is not responding or has been removed from the network.

Some parameters of devices, including the Unique Instance, Label, Installation Description #1 and Installation #2, can be edited directly in the device list window, just as you might do with a spreadsheet program. The device parameters that can you can change have a white background, as opposed to device parameters that are not user-changeable, which have a yellow background.

| Expand       | Node Address     | Manufacturer | Mfg Model ID            | Mfg Serial Number | Source           | Unique Instance          | Label                       | Current Software            | Available Software  | Installation Description #1 | Installation Description #2 |                       |                        |                 |                   |                               |                  |     |
|--------------|------------------|--------------|-------------------------|-------------------|------------------|--------------------------|-----------------------------|-----------------------------|---------------------|-----------------------------|-----------------------------|-----------------------|------------------------|-----------------|-------------------|-------------------------------|------------------|-----|
|              | Node Address     | Maretron     | DSM250                  | 1320016           |                  | 0                        | Test                        | 1.3.10                      | 1.3.10              | L/H Side Pilothouse         |                             |                       |                        |                 |                   |                               |                  |     |
|              | B1               | Maretron     | ACM100                  | 1389904           |                  | 1                        | SHORE POWER                 | 1.0.5                       | 1.0.5               | Lezzarette                  | Stbd Side                   |                       |                        |                 |                   |                               |                  |     |
|              | B2               | Maretron     | DCM100                  | 1400046           |                  | 0                        | A                           | 1.0.4                       | 1.0.4               | Engine Room                 | Forward Wall Port...        |                       |                        |                 |                   |                               |                  |     |
| +            | D3               | Maretron     | SIM100                  | 1429902           |                  | 0                        | P/H DC CKTS                 | 1.1.1                       | 1.1.1               | Under helm                  | Port Side                   |                       |                        |                 |                   |                               |                  |     |
|              | Indicator        |              | Label                   |                   |                  |                          |                             |                             |                     |                             |                             |                       |                        |                 |                   |                               |                  |     |
|              | 1                |              | P/H LIGHTS              |                   |                  |                          |                             |                             |                     |                             |                             |                       |                        |                 |                   |                               |                  |     |
|              | 2                |              | NAV ELECTRONICS         |                   |                  |                          |                             |                             |                     |                             |                             |                       |                        |                 |                   |                               |                  |     |
|              | 3                |              | AUTOPILOT               |                   |                  |                          |                             |                             |                     |                             |                             |                       |                        |                 |                   |                               |                  |     |
|              | 4                |              | RADAR                   |                   |                  |                          |                             |                             |                     |                             |                             |                       |                        |                 |                   |                               |                  |     |
|              | 5                |              | XM RECEIVER             |                   |                  |                          |                             |                             |                     |                             |                             |                       |                        |                 |                   |                               |                  |     |
|              | 6                |              | VHF RADIO               |                   |                  |                          |                             |                             |                     |                             |                             |                       |                        |                 |                   |                               |                  |     |
|              | 29               | Maretron     | TMP100                  | 1480009           |                  |                          |                             | 1.1.1                       | 1.1.1               | Engine Room                 | Aft Wall                    |                       |                        |                 |                   |                               |                  |     |
|              | Hardware Channel |              | Source                  |                   | Instance         | Label                    |                             |                             |                     |                             |                             |                       |                        |                 |                   |                               |                  |     |
|              | 0                |              | Exhaust Gas Temperature |                   | 0                | PORT ENGINE EXHAUST TEMP |                             |                             |                     |                             |                             |                       |                        |                 |                   |                               |                  |     |
|              | 1                |              | Exhaust Gas Temperature |                   | 1                | STBD ENGINE EXHAUST TEMP |                             |                             |                     |                             |                             |                       |                        |                 |                   |                               |                  |     |
|              | 2                |              | Engine Room Temperature |                   | 0                | ENGINE ROOM TEMP         |                             |                             |                     |                             |                             |                       |                        |                 |                   |                               |                  |     |
|              | 3                |              | Live Well Temperature   |                   | 0                | LIVE WELL TEMP           |                             |                             |                     |                             |                             |                       |                        |                 |                   |                               |                  |     |
|              | 4                |              | Freezer Temperature     |                   | 0                | FREEZER TEMP             |                             |                             |                     |                             |                             |                       |                        |                 |                   |                               |                  |     |
|              | 5                |              | Main Cabin Temperature  |                   | 0                | SALON TEMP               |                             |                             |                     |                             |                             |                       |                        |                 |                   |                               |                  |     |
|              | 72               | Maretron     | TLA100                  | 2097151           | Fuel             | 0                        | Lbl                         | 1.6.14                      | 1.6.14              | Lezzarette                  | Below Floor                 |                       |                        |                 |                   |                               |                  |     |
|              | 21               | Maretron     | GPS100                  | 211               |                  | 211                      | GPS211 JP15 ...             | 2.0.15C                     | 2.0.1               | Radar Arch                  |                             |                       |                        |                 |                   |                               |                  |     |
| Node Address | Manufacturer     | Mfg Model ID | Mfg Model Version       | Mfg Serial Number | Current Software | Available Software       | Installation Description #1 | Installation Description #2 | Mfg Information     | Device Class                | Device Function             | Device Instance Upper | Dev. Inst. Lower / Pn. | System Instance | NMEA 2000 Version | NMEA 2000 Certification Level | Mfg Product Code | LEN |
| A4           | Maretron         | J2K100       | 1.0                     | 2097151           |                  |                          |                             |                             | Maretron 1-866-5... | Internet...                 | Bridge                      | 0                     | 0                      | 0               | 1.210             | A                             | 4319             | 3   |
| 1A           | Maretron         | DSM250       | 1.0                     | 1300003           | 1.1.0            | 1.1.0                    |                             |                             | Maretron 1-866-5... | Instrum...                  | General ...                 | 0                     | 0                      | 0               | 1.210             | A                             | 16434            | 13  |
| 50           | Maretron         | USB100       | 1.0                     | 1313134           | 1.7.2            | 1.7.2                    |                             |                             | Maretron 1-866-5... | Internet...                 | Gateway                     | 0                     | 0                      | 0               | 1.210             | A                             | 945              | 3   |

Figure 27 -- Device List Window

### 5.3.1 Expand

Some NMEA 2000 devices can transmit more than one distinct parameter (this is referred to as having multiple hardware channels). If a particular device can display more than one parameter, a “+” sign appears in the “Expand” column of the screen. You can click on this “+” sign, and the single device row will expand to add a row for each hardware channel in the device.

### 5.3.2 Node Address

Each device on an NMEA 2000 network claims a node address between the value of 0 (0x0 hexadecimal) and 251 (0xFB hexadecimal). These node addresses may change as new devices are added to the network. This column shows the node addresses claimed by each device on the network.

### 5.3.3 Manufacturer

This column shows the manufacturer reported by each device. The manufacturer's names are read from a table in the N2KAnalyzer® software which translates the manufacturer's code reported by the device. If a new NMEA 2000 manufacturer has been added since the N2KAnalyzer® software was released, this will show up as a numeric value. If this happens, please either

- Update your N2KAnalyzer® software by selecting *Web->Download Firmware Updates* menu item, or
- Check the NMEA website for the current list of manufacturer codes.

### 5.3.4 Mfg Model ID

This column shows the model ID (sometimes known as Device Model, Model Number, or Model Name) reported by each device.

### 5.3.5 Mfg Model Version

This column shows the hardware version number reported by each device.

### 5.3.6 Mfg Serial Number

This column shows the serial number reported by each device.

### 5.3.7 Source

This column shows the source type for the device, if the device has a single hardware channel and a source type. Currently, Maretron TLA (Tank Level Adapter) and TLM (Tank Level Monitor) devices fall into this category.

### 5.3.8 Unique Instance

This column shows the Unique Instance for the device. The Unique Instance is the instance number that is used to identify the device in N2KView or DSM250. It may correspond to the device instance or to a channel instance, depending on the device.

### 5.3.9 Current Software

This column shows the software version number reported by each device.

### 5.3.10 Available Software

This column shows the most recent version of software that is available for each device that can be updated by the N2KAnalyzer® software. This number will be highlighted in red if it is newer than the version of the firmware currently installed on the device. If this number is lower than the version number shown in the *Current Software* column, then please download a more recent copy of N2KAnalyzer® from <http://www.maretron.com/downloads>.

### 5.3.11 Install Description #1

This column shows the "Install Description #1" field of the Product Information message, which is user-programmable in some devices and may be used by a user to describe various information; for example, the location of the equipment.

### **5.3.12 Install Description #2**

This column shows the “Install Description #2” field of the Product Information message, which is user-programmable in some devices and may be used by a user to describe various information; for example, the location of the equipment.

### **5.3.13 Mfg Information**

This column shows the Manufacturer's Information field of the Product Information, which is programmed by a device manufacturer to describe various information; for example, contact information for the manufacturer.

### **5.3.14 Device Class**

This column shows the NMEA 2000 device class as reported by each device.

### **5.3.15 Device Function**

This column shows the NMEA 2000 device function (this is a more-specific indication of the device function within the context of the device class) reported by each device.

### **5.3.16 Device Instance**

This column shows the NMEA 2000 device instance reported by each device.

### **5.3.17 System Instance**

This column shows the NMEA 2000 system instance reported by each device.

### **5.3.18 NMEA 2000 Version**

This column indicates the version of the NMEA 2000 standard to which the device was designed.

### **5.3.19 NMEA 2000 Certification Level**

This column indicates the level of network functionality implemented by the device. Current values include “A”, which indicates full functionality, and “B”, which indicates reduced functionality.

### **5.3.20 MFG Product Code**

This column indicates the numeric product code assigned to the device by NMEA.

### **5.3.21 LEN**

This column indicates the Load Equivalent Number reported by the device. Each LEN indicates 50mA current consumed by the device. For example, a device with LEN equal to 3 will consume a maximum of 150mA current. This information is required for network cabling and power supply planning.

## **5.4 Device Channel Information**

If a device supports multiple hardware channels, clicking on the “+” symbol in the “Expand” column will open another grid showing information for the hardware channels. This window will

contain different information depending on the device. Following is a list of columns that are supported:

## 5.4.1 Hardware Channel

This column identifies which hardware channel the information in that row is for. For some types of devices, this column will contain a number corresponding to the number of the hardware channel the information is for. For other devices, this column may contain a text string describing the function of the channel.

## 5.4.2 Indicator

For RIM and SIM devices, this column contains the number of the indicator the information in that row is for.

## 5.4.3 Source

For hardware channels which indicate a source type, this column contains the name of the source type currently selected for that channel.

## 5.4.4 Instance

For channels which indicate a numeric instance, this column contains the number of the data instance currently selected for that channel.

## 5.4.5 Label

This column contains the text label which is assigned to that channel. This label will appear in N2KView and DSM250 when you are selecting parameters to display in a component or on a favorite screen.

## 5.5 Status Bar

The status bar at the bottom of the main program window displays information about the current operating mode of the N2KAnalyzer® software.

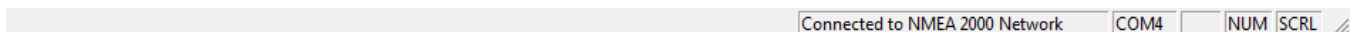


Figure 28 -- Status Bar

### 5.5.1 Status Message Area

This area displays the current status of the N2KAnalyzer® software, as well as help for toolbar buttons over which the mouse cursor is located.

### 5.5.2 Connection Status Indicator

This area displays “Connected to NMEA 2000 Network” if the N2KAnalyzer® software is currently connected to a NMEA 2000 network through a gateway, and “Disconnected from NMEA 2000 Network” at all other times.

### **5.5.3 COM Port Selection Indicator**

If the N2KAnalyzer<sup>®</sup> software is operating in online mode, then this area of the status bar will display the name of the serial port (COM port) being used to connect to the NMEA 2000 gateway.

### **5.5.4 Caps Lock Indicator**

This area of the status bar displays “CAP” if caps lock is active on the keyboard, and is blank otherwise.

### **5.5.5 Num Lock Indicator**

This area of the status bar displays “NUM” if num lock is active on the keyboard, and is blank otherwise.

### **5.5.6 Scroll Lock Indicator**

This area of the status bar displays “SCRL” if scroll lock is active on the keyboard, and is blank otherwise.

## **6 Troubleshooting**

**SYMPTOM:** When trying to enter online mode, you see a dialog box with the message ‘Failure to connect to NMEA 2000 Gateway on port “COMx”’.

This message indicates that the N2KAnalyzer<sup>®</sup> software was unable to establish a connection to the NMEA 2000 network through the NMEA 2000 gateway on the indicated serial port. Following are some steps you can take to resolve the problem.

- Select the *Setup->Configure Gateway...* menu item to select a valid NMEA 2000 gateway.
- Check that the NMEA 2000 gateway is connected to a powered NMEA 2000 network and is receiving power through the NMEA 2000 network connection.
- Check that the NMEA 2000 gateway is connected to the computer and that the connecting cable is good. Try reconnecting the NMEA 2000 gateway to the computer with a different cable.
- Check the security of all NMEA 2000 network connections.
- Try disconnecting and reconnecting the cable between the computer and the NMEA 2000 gateway.
- Reboot the computer.

**SYMPTOM:** You see only the NMEA 2000 Gateway in the device list window. This means that the NMEA 2000 Gateway is properly connected to the computer, but is unable to communicate with other NMEA 2000 devices. Following are some steps you can take to resolve the problem,

- Ensure that the proper drivers are installed for the NMEA 2000 gateway.
- Check that the NMEA 2000 network has two termination resistors installed.

- Check the security of all NMEA 2000 network connections. Ensure that at least one other device is connected to the NMEA 2000 network.

## 7 Technical Support

If you require technical support for Maretron products, you can reach us in any of the following ways:

Telephone: 1-866-550-9100  
Fax: 1-602-861-1777  
E-mail: [support@maretron.com](mailto:support@maretron.com)  
World Wide Web: <http://www.maretron.com>  
Mail: Maretron, LLP  
Attn: Technical Support  
9014 N. 23<sup>rd</sup> Ave Suite 10  
Phoenix, AZ 85021 USA